

LEILA



Feel at Home

Vol. II





Table of Contents

004	Introduction
008	A Family Company
010	Dreaming in London
064	Flowering in Pantelleria
116	Crossing in Antwerp
168	Products Overview
180	Technical Sheets

010, Dreaming in London



064, Flowering in Pantelleria



116, Crossing in Antwerp



Protegge e apre al mondo, accoglie l'energia del sole e conosce la pace della notte, è nave nel porto e inizio di avventura. È la casa. E la casa LEMA nasce dal rispetto per chi abiterà questa splendida combinazione di ricordi, esperienze, progetti. La casa unisce ogni sfumatura del tempo, e LEMA, che da sempre coglie le energie della contemporaneità, crea arredi che resistono alle mode e accompagnano la crescita di chi li vive. Succede quando all'origine di ogni gesto, di ogni scelta di materiali, linee e colori, c'è un pensiero così forte e generoso da essere straordinariamente versatile e ovunque riconoscibile. Succede perché LEMA è una storia di quattro generazioni, un racconto familiare che cresce nel tempo.

Forse per questa capacità di fluire nel corso degli anni e di tenere ferma la rotta, LEMA ha scelto tre magnifiche case che si affacciano ognuna sull'acqua. Acque di fiume a Londra, acque del Mediterraneo a Pantelleria, acque di avventure oceaniche ad Anversa. Ognuna di queste case è un viaggio, ognuna è un approdo sicuro per scoprire che raffinatezza, cura artigianale, passione, eleganza italiana sono i punti cardinali di un mondo meravigliosamente su misura.





It protects yet opens to the world. It welcomes the energy of the sun and knows the quiet of the night. It is a ship in the harbour, and the beginning of a journey. It is home. A LEMA home is born from a deep respect for those who will inhabit it, a unique blend of memories, experiences and aspirations. Home is where every shade of time comes together, and LEMA, attuned to the spirit of the present, creates furnishings that outlast trends and grow alongside the people who live with them. This happens when every gesture, every choice of materials, lines and colours, is guided by a vision so strong and generous that it becomes both unmistakable and remarkably versatile. It happens because LEMA is a story of four generations.

Perhaps it is this ability to flow with time while staying true to its course that led LEMA to choose three extraordinary homes, each facing the water: the river in London, the Mediterranean in Pantelleria, and the open sea of distant journeys in Antwerp. Each home is a voyage, each a haven where refinement, craftsmanship, passion and Italian elegance become the cardinal points of a world tailored to measure.

Una storia di famiglia, A Family Company



A Family Company



Ormai è quasi un secolo, e di questa lunga durata, di questo vivere il tempo con naturalezza e fiducia, LEMA ha fatto la sua cifra stilistica. LEMA è una storia di famiglia e di quattro generazioni che attraversa il Novecento ed entra nel terzo millennio, fedele ai valori che l'hanno guidata da sempre. Nei primi anni Trenta, nel centro di Arosio, sulle colline della Brianza, la famiglia Meroni apriva una bottega artigiana di arredi. E forse proprio la posizione elevata di questo antico borgo, da cui si intravedono già le Prealpi, ha suggerito un futuro più ampio, più aperto.

La prima tappa del viaggio è Milano. Nel 1948 la famiglia Meroni inaugura il suo primo negozio e poco dopo la sua prima azienda, La Sorgente dei Mobili. È solo una questione di tempo, perché un giorno l'atlante del design internazionale registrerà la presenza di LEMA in oltre sessanta paesi, in ogni continente. Eppure la "sorgente" a cui LEMA attinge resta la stessa: è la sapienza artigianale, la cura, la passione, l'attenzione al dettaglio. Sono quei gesti che solo il tempo rende virtuosi.

Una storia di famiglia

A Family Company

III

Nearly a century has passed, and LEMA has made this enduring sense of time, this natural and confident way of living, its defining signature. LEMA is a family story spanning the twentieth century and entering the third millennium while remaining true to the values that have always guided it. In the early 1930s, in the centre of Arosio, on the hills of Brianza, the Meroni family opened a small artisan workshop. Perhaps it was the elevated position of this historic village, with the Prealps visible in the distance, that suggested a broader, more open future.

The first step of the journey led to Milan. In 1948, the Meroni family opened their first store and, shortly after, their first company: La Sorgente dei Mobili. It was only a matter of time before LEMA's presence was marked on the international design map, reaching more than sixty countries across every continent. And yet, the "source" where LEMA draws have remained the same: craftsmanship, care, passion and attention to detail, gestures refined over time, made virtuous through experience.

Una storia di famiglia

A Family Company

IV



La modernità è il tempo del design. L'eleganza è un diritto di tutti. Nel 1969 Luigi ed Enrico, figli di Angelo, il fondatore, segnano la svolta e avviano la produzione industriale. Il progetto è affidato ad Angelo Mangiarotti, protagonista dell'architettura e del design del Novecento. La sede dello stabilimento è Alzate Brianza, in una terra che da secoli è famosa per la qualità dei suoi artigiani. L'orizzonte di Mangiarotti guarda verso l'America di Frank Lloyd Wright, Walter Gropius e Mies van der Rohe. Luigi ed Enrico Meroni creano l'acronimo LEMA. Il primo mondo è la famiglia e se cresci in famiglia, conosci i suoi tempi, i suoi spazi. Anche quelli degli altri.

Nel 1970 LEMA diventa uno dei marchi più originali disegnati da Bob Noorda, grafico rivoluzionario e Compasso d'Oro. Nei dieci elementi che compongono le quattro lettere del logo c'è l'idea che ispira la produzione a venire. LEMA, ovvero un sistema di arredi modulabili e su misura. LEMA è il valore dell'unicità. LEMA è il rispetto delle esigenze di ogni cliente. I clienti, uno diverso dall'altro, sono le più eleganti residenze private, l'hotellerie più esclusiva, il retail, i multi apartment, i più innovativi spazi commerciali.

Una storia di famiglia

A Family Company

VI

Modernity is the age of design. Elegance is a right for all. In 1969, Luigi and Enrico, sons of the founder Angelo, marked a turning point by launching industrial production. The project was entrusted to Angelo Mangiarotti, a leading figure in twentieth-century architecture and design. The production site was established in Alzate Brianza, in a region long renowned for the excellence of its artisans. Mangiarotti's vision looked towards America, to Frank Lloyd Wright, Walter Gropius and Mies van der Rohe. Luigi and Enrico Meroni created the acronym LEMA. The first world is that of the family, and when you grow up within it, you come to understand its rhythms and spaces, as well as those of others.

In 1970, LEMA introduced one of its most distinctive elements: the logo designed by Bob Noorda, a groundbreaking graphic designer and Compasso d'Oro award winner. Within the ten elements that compose the four letters lies the idea that would shape everything to come: LEMA as a system of modular, made-to-measure furnishings; LEMA as the value of uniqueness; LEMA as respect for each client's individual needs. Clients, each different from the next, range from the most refined private residences to exclusive hospitality, retail spaces, multi-apartment projects and innovative commercial environments.





Tempo di primati. Nel 1978 nasce Lo Scaffale, sigla storica L15, a firma di Tito Agnoli, primo sistema italiano a spalla portante in più finiture, prodotto su scala industriale. Nel 1981 è la volta dell'Armadio al centimetro, programma modulare per arredi su misura, versatile nella ricchezza delle combinazioni, finiture e materiali. Quindici anni dopo, Angelo Meroni, figlio di Luigi, insieme alle sorelle Marialuisa e Marinella, amplia ulteriormente le collezioni su misura. Sono passati cinquant'anni dagli esordi, molto è cambiato, molto è rimasto identico. La dedizione, per esempio, quell'andare sempre oltre, immaginando di più, un'altra variante. E ci vuole tempo.

Un'azienda-persona. Un'azienda in crescita. Nel 1992 LEMA raddoppia la sede e inaugura il nuovo stabilimento di Giusano, sempre in Brianza e sempre a firma di Angelo Mangiarotti. Due anni dopo Piero Lissoni, nuovo art director, apre la cultura di LEMA al talento e alla visione di designer internazionali. Libertà e coerenza insieme. Valore guida, la sartorialità. Risultato, Selecta, sistema modulare con oltre 1500 elementi in catalogo. Versatilità, fantasia, rigore, gioco. Sì, gioco, perché lavorare è anche un piacere.

Una storia di famiglia

A Family Company

IX

A time of firsts. In 1978, Lo Scaffale, code L15, designed by Tito Agnoli, was introduced as the first Italian load-bearing shelving system available in multiple finishes and produced on an industrial scale. In 1981 Armadio al centimetro was introduced, a modular system for made-to-measure wardrobes, remarkable for the richness of its combinations, finishes and materials. Fifteen years later, Angelo Meroni, son of Luigi, together with his sisters Marialuisa and Marinella, further expanded the bespoke collections. Fifty years passed since the beginning. Much had changed, yet much remained the same: dedication, the constant drive to go further, to imagine more, to explore new variations. And this takes time.

A company with a human dimension. A company in continuous growth. In 1992, LEMA doubled its headquarters and inaugurated a new production facility in Giusano, once again in Brianza and once again designed by Angelo Mangiarotti. Two years later, Piero Lissoni, as art director, opened LEMA's culture to the talent and vision of international designers. Freedom and coherence held together. The guiding value is sartoriality. The result is Selecta, a modular system with over 1,500 elements in the catalogue. Versatility, imagination, rigour and play. Yes, play, because work is also a form of pleasure.

Sicuramente essere nati e cresciuti in Italia conta. Non solo perché l'Italia è una terra d'arte e di capolavori, da millenni, ma perché è una terra ospitale, curiosa, attenta all'altro. Per questo, quando ha iniziato a viaggiare e a conoscere altre realtà, LEMA ha trasformato la cultura artigianale del Made in Italy in una cultura più profonda, una cultura di incontro. LEMA ha imparato moltissimo dai suoi clienti, in ogni parte del mondo. E grazie ai suoi clienti, e ai loro desideri, ha reso ancora più virtuoso il suo metodo di lavoro. Che in fondo è molto semplice: il prodotto non è finito fino a quando non è perfetto.

Ci vuole tempo, certo. Tempo per immaginare la complessità e renderla invisibile, perché la bellezza più autentica è quella che non tradisce sforzi e non mostra i muscoli. La bellezza di LEMA è l'esperienza. Ci vuole esperienza per creare lo spazio degli altri. Ci vuole cura e passione. E ci vuole soprattutto un grande senso di responsabilità perché gli arredi di una casa sono parte di un progetto di vita libero, da soli, in due, in famiglia. Per questo gli arredi LEMA non hanno tempo, perché del tempo conoscono lo straordinario valore.

Una storia di famiglia

A Family Company

X

Being born and raised in Italy matters, not only because it has been a land of art and masterpieces for millennia, but because it is a place that is welcoming, curious and attentive to others. For this reason, when LEMA began to travel and engage with different cultures, it transformed its artisanal Made in Italy heritage into something deeper: a culture of encounter. LEMA has learned a great deal from its clients around the world. And thanks to them, and to their needs, it has refined its way of working even further. At its core, the principle is simple: a product is not finished until it is perfect.

It takes time, of course. Time to imagine complexity and render it invisible, because the most authentic beauty never reveals effort or strain. LEMA's beauty lies in experience. It takes experience to shape the spaces of others. It takes care and passion. And above all, it takes a deep sense of responsibility, because the furnishings of a home are part of a life project, whether lived alone, as a couple or as a family. This is why LEMA furnishings are timeless: they understand the true value of time.



LEMA, un'azienda, quattro generazioni, quasi un secolo di storia per creare arredi senza tempo.
LEMA, a company, four generations, nearly a century of history creating timeless furnishings.





Dreaming in London



Dreaming in London

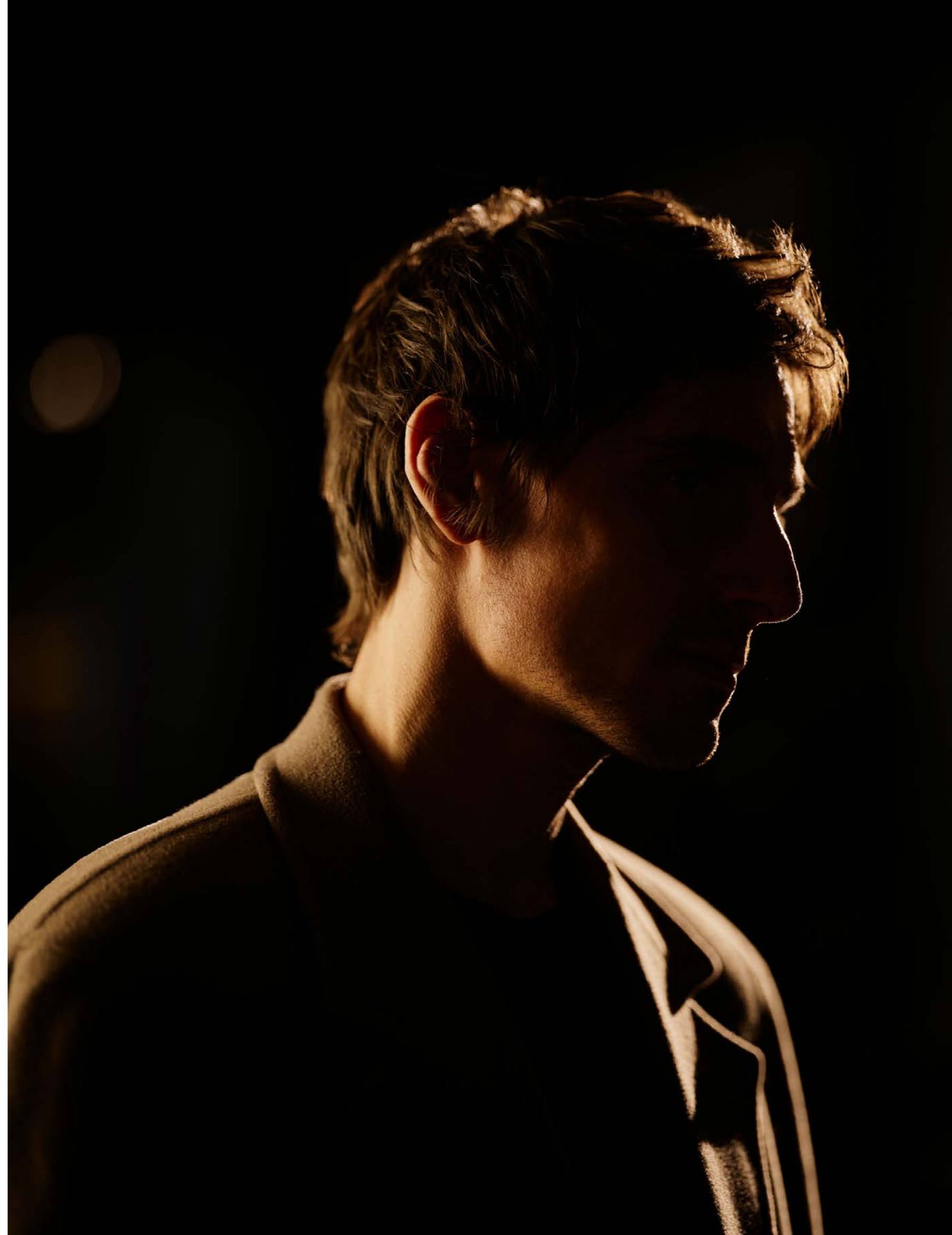


Nel suo nome è il nome di tutte le città. Londra, la "city", un paradigma di modernità, come dire che lo spirito costruttivo e aperto al futuro, è nato qui. Ed è nata qui, lungo il Tamigi, quell'eleganza sicura e composta che ogni tanto si rilassa, si toglie la giacca e torna a casa, in tutti i sensi. L'aria che avvolge la capitale inglese è di un grigio leggero, venato di azzurro. Aria di conquista, di bilanci, di progetti, di numeri esatti. Nel cuore di una dimora ai piani alti di un grattacielo, splendono i colori di un'altra stagione. Altre sensazioni. Lo stile si rinnova.

Vengono in mente gli spazi sontuosi e riservati di un antico club. Boiserie alle pareti, pareti di libri, libri sul velluto morbido di un divano e in sala da pranzo, accanto a un tavolo-scultura, sculture africane. È un'onda di raffinatezza che accoglie nel suo divenire armonioso anche qualche eccezione, una poltrona rosa, un'altra in cuoio, un mobile di lacca verde. Accanto, un guardaroba diventa parete di luce. Al suo interno, il guardaroba di un gentile. Molte giacche, ma ci sono altre vite all'orizzonte.

Its name holds the echo of every city. London, the City, is a paradigm of modernity, a place where a forward-looking spirit seems to have taken shape. Here, along the river Thames, a poised, self-assured elegance was born, one that, every so often, unwinds, slips off its jacket, and truly returns home. The air that wraps the English capital is soft grey, veined with blue. An atmosphere of ambition, of balance sheets and bold plans, of precision and clarity. Yet high above the city, inside a residence set on the upper floors of a skyscraper, the colours of another season come alive. Different moods, different sensations. Style renews itself.

One is reminded of the discreet grandeur of a private club: wood-panelled walls, lined with books, volumes resting on the soft velvet of a sofa. In the dining room, beside a sculptural table, African artworks stand quietly. It is a wave of refinement that, in its harmonious flow, embraces the occasional exception, a pink armchair, another in leather, a cabinet in green lacquer. Nearby, a wardrobe becomes a wall of light. Inside, a gentleman's collection, many jackets, certainly, but with other lives already on the horizon.









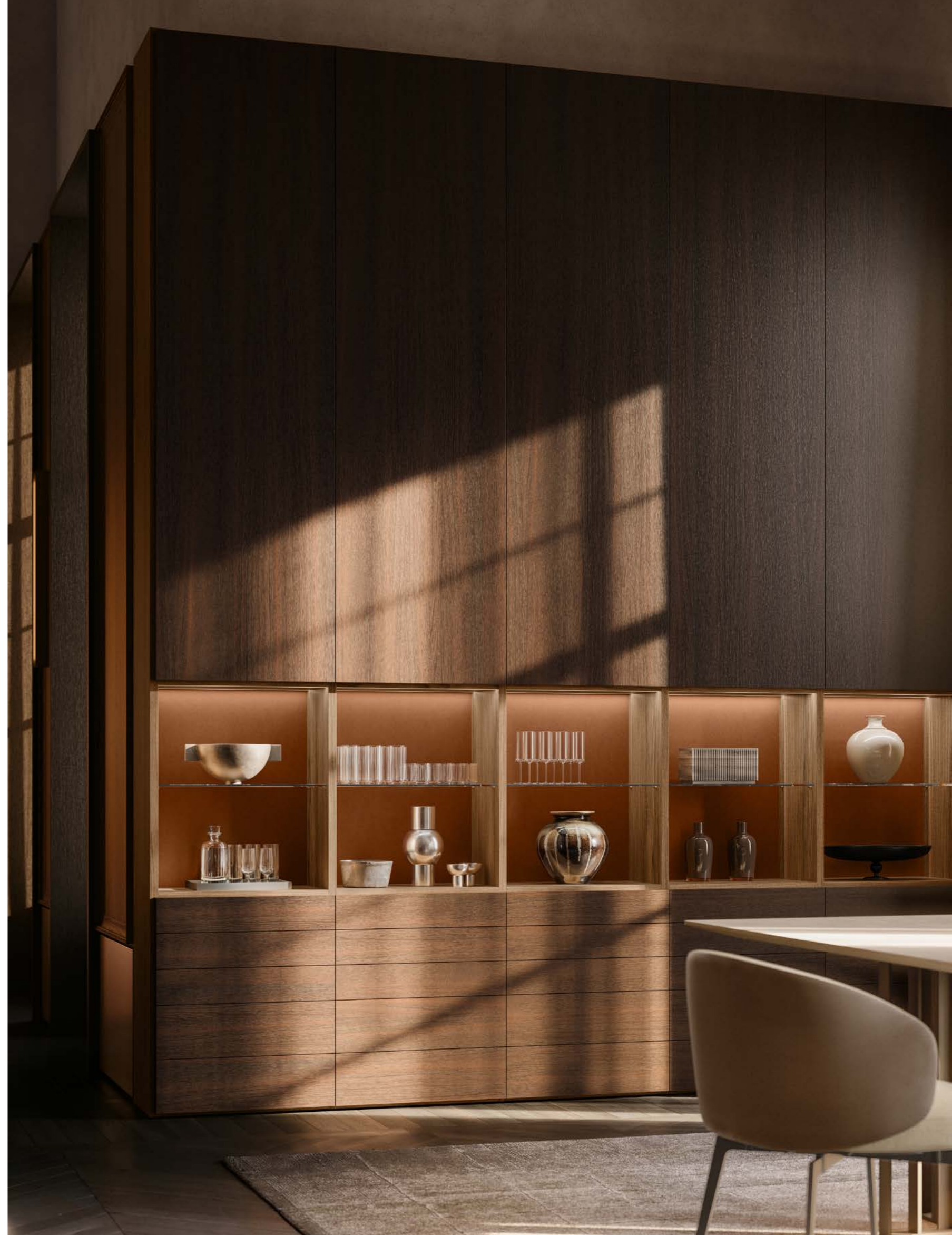


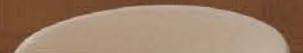










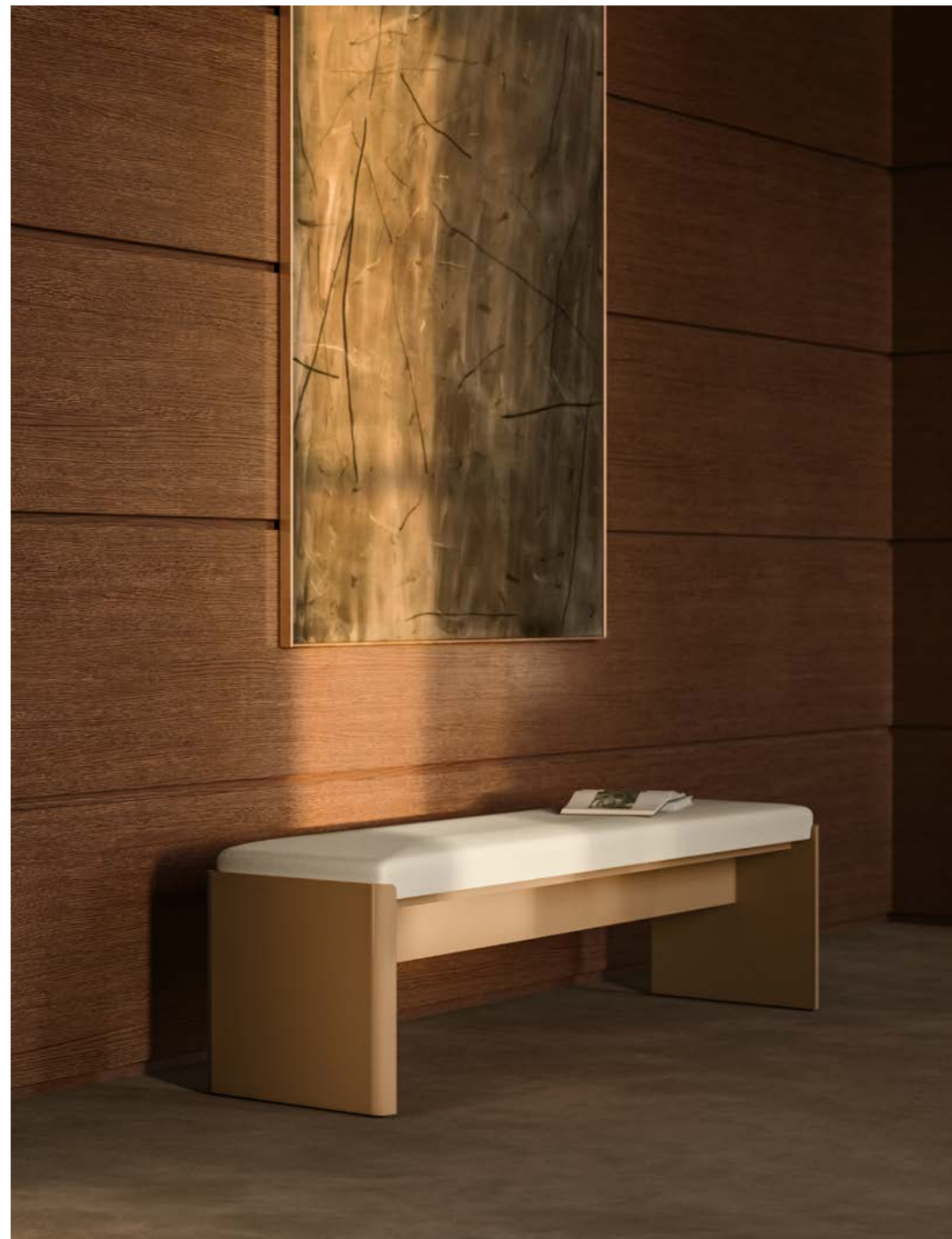




















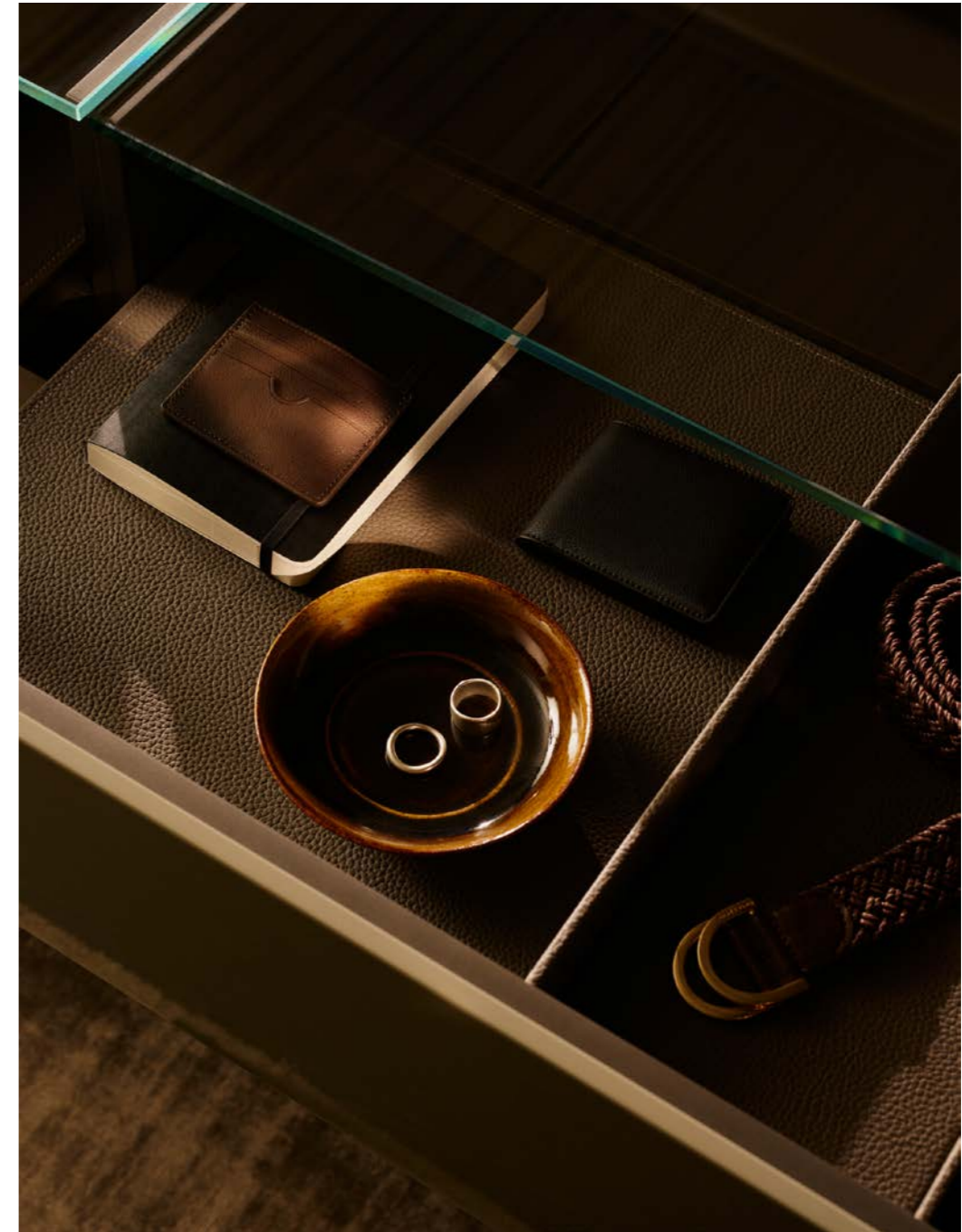


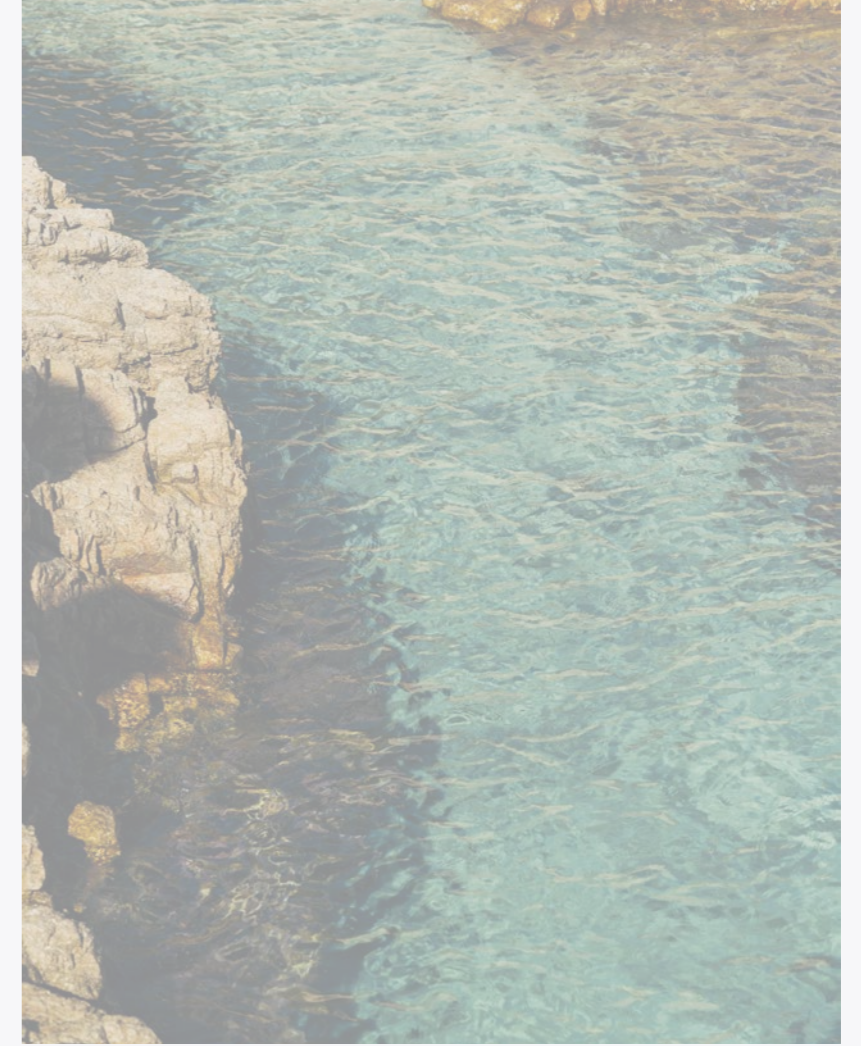




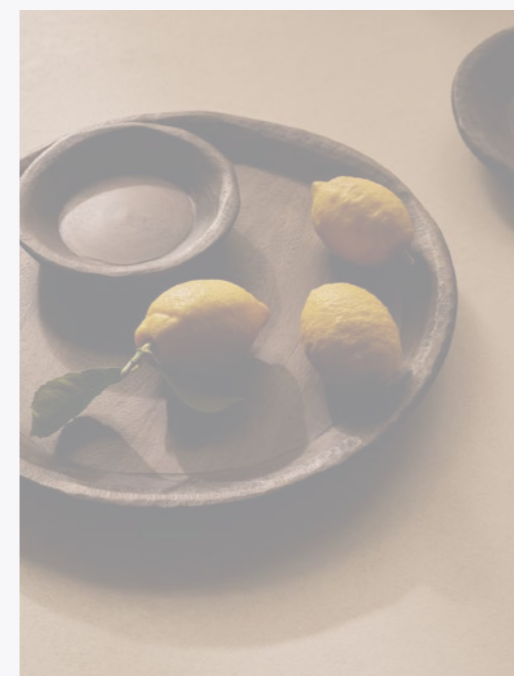




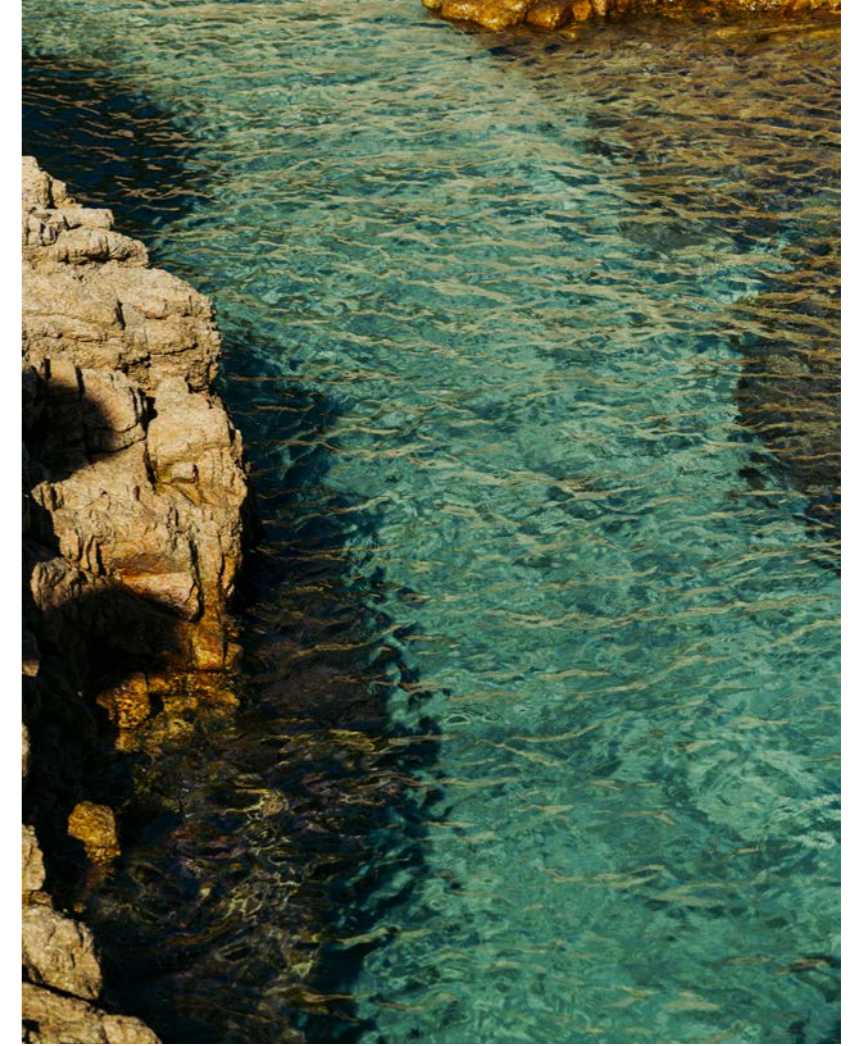




Flowering in Pantelleria



Flowering in Pantelleria



Una folata di vento sfiora la terra e porta con sé il profumo della salsedine e della mentuccia selvatica. Nella sua corsa il vento racconta la storia di Pantelleria, isola di un Mediterraneo crocevia di culture, isola-donna che accoglie la bellezza e la fa germogliare. Ed è come se l'interno di una casa respirasse insieme alla natura che la circonda, e materie e colori del paesaggio, quella pietra grigia, quel bianco di cristalli di sale, quella corteccia, quelle acque turchesi tra le rocce infondessero una serenità profonda, un equilibrio, un'origine. L'inizio di una vita insieme.

A Pantelleria le cose si fanno a mano. Una mano sapiente che disegna forme di semplicità antica. Sono linee eleganti perché hanno dimenticato ciò che è inutile, sono volumi morbidi, sono tessuti forti e delicati insieme, sono intrecci, e senza intrecci non esistono le trame dei libri. Il racconto è ampio, armonioso, la geometria di un immenso divano accanto alla luna piena di un tavolino in pietra, il ritmo di una libreria che divide e unisce gli ambienti, e quella luce che accarezza ogni materia e chi l'ha scelta.

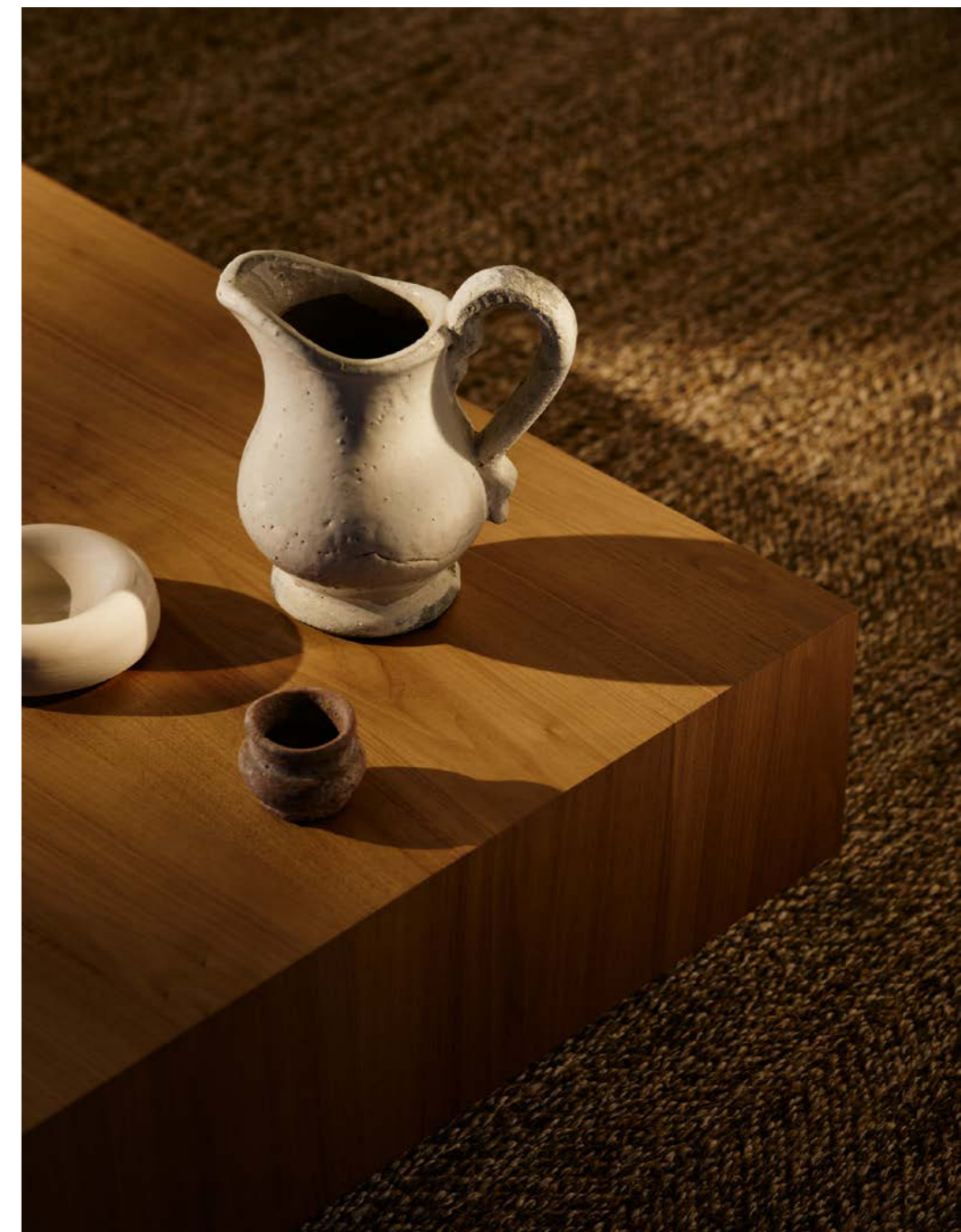
A gust of wind brushes the land, carrying with it the scent of salt and wild mint. In its passage, the wind tells the story of Pantelleria, an island at the crossroads of the Mediterranean, an island-woman that welcomes beauty and lets it bloom. It feels as though the interior of a home breathes in harmony with the surrounding landscape. Materials and colours, grey stone, the white of salt crystals, textured bark, turquoise water among the rocks, instil a deep sense of calm, balance and origin. The beginning of a life together.

On Pantelleria, things are made by hand. A knowing hand that shapes forms of timeless simplicity. These are elegant lines because they have shed the unnecessary: soft volumes, textiles both strong and delicate, interwoven textures, because without weaving there are no stories to be told. The narrative unfolds wide and harmonious: the geometry of a vast sofa beside the full moon of a stone table, the rhythm of a bookcase that both divides and connects spaces, and that light which gently touches every material, and those who have chosen it.







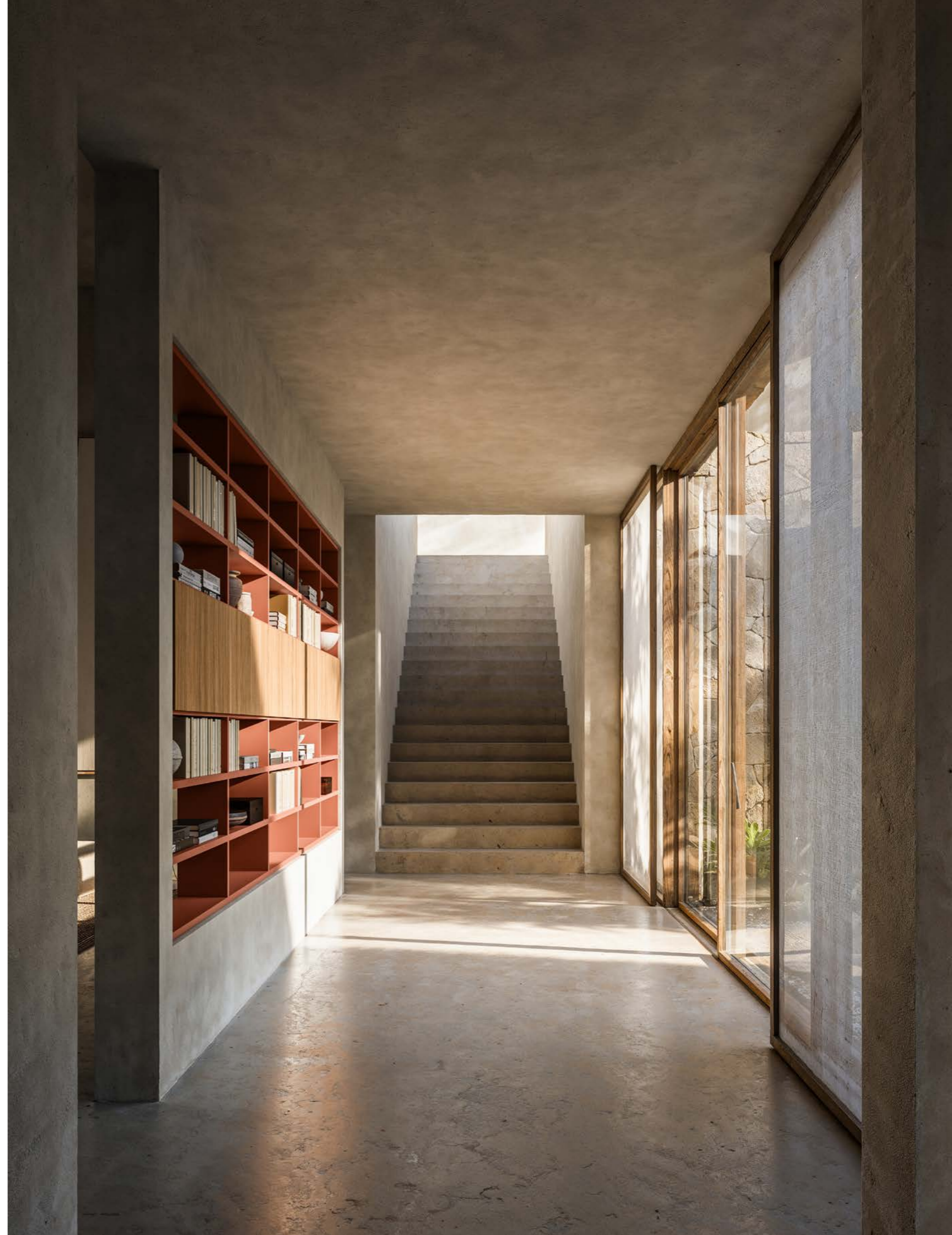


















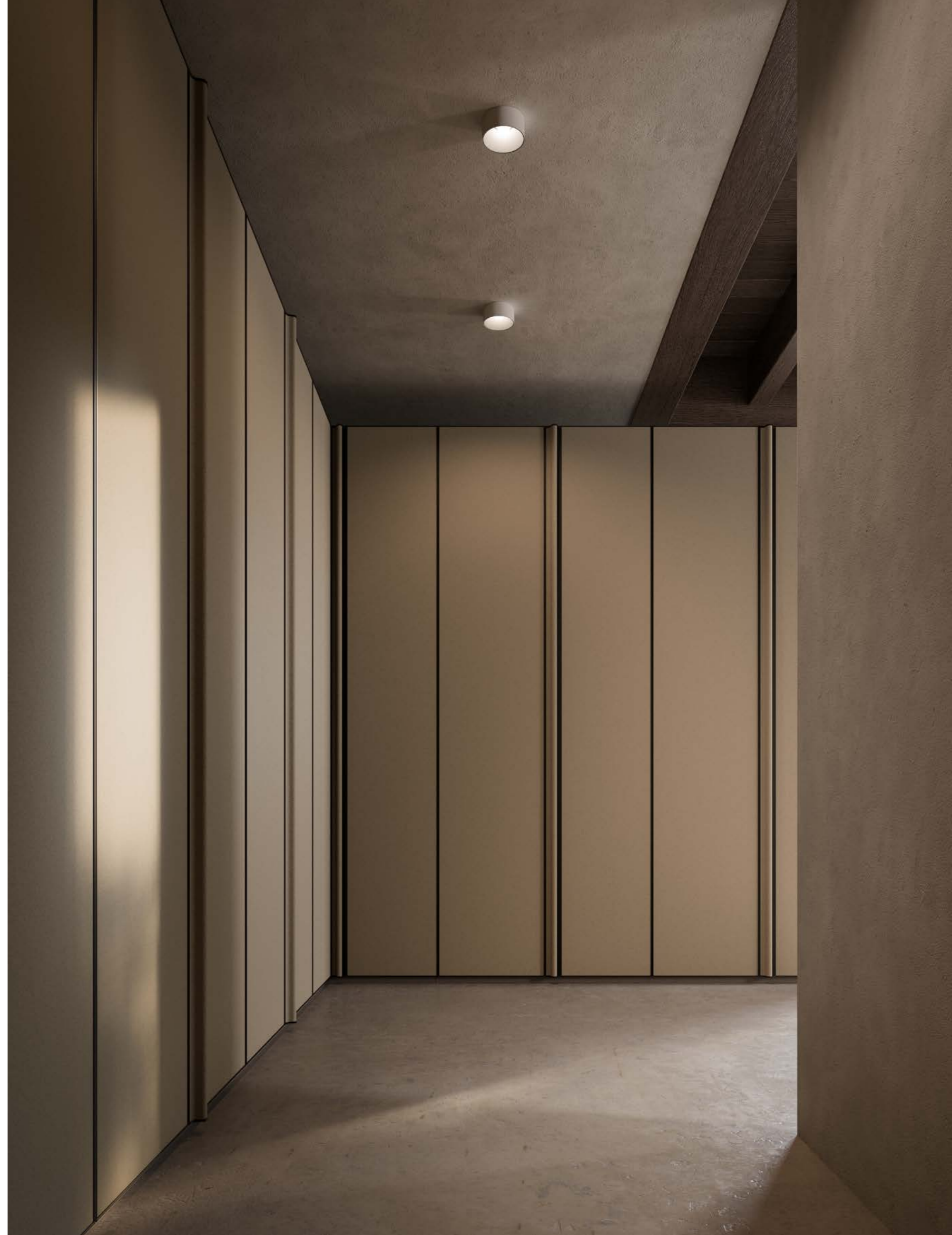




















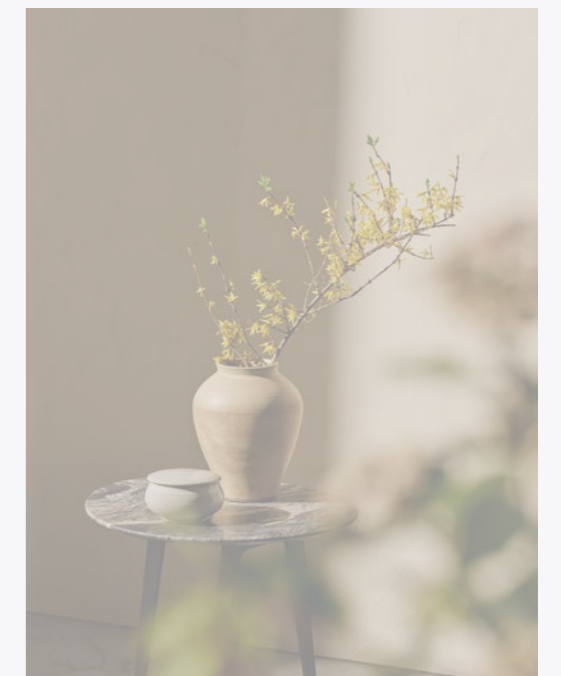




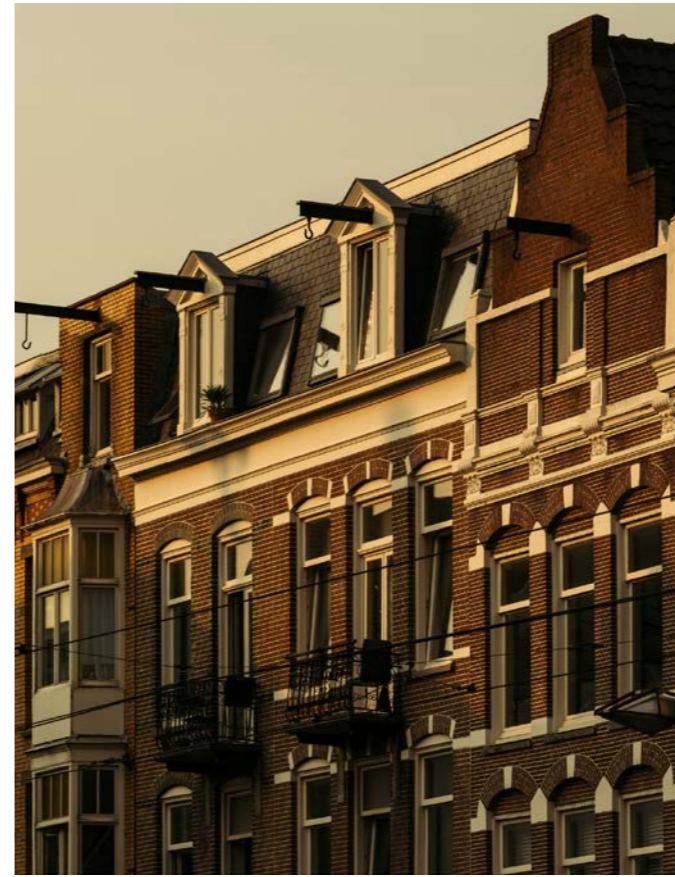




Crossing in Antwerp



Crossing in Antwerp



Una giornata del diciassettesimo secolo. Sulle banchine del porto di Anversa arrivano mercanzie da ogni parte del mondo, dall'Europa, dai Tropici, dalle Americhe. Lo sguardo della città è vasto, il suo carattere è forte, concreto. Anche le idee viaggiano e Paul Rubens viaggia in Italia per studiare Raffaello, Michelangelo, Tiziano. Quando torna ad Anversa è un artista diverso, originale perché coltissimo. La sua casa oggi è un museo. E ogni casa che si ispira alla stessa apertura, a quel discorso ampio e vitale insieme, è un piccolo, grande capolavoro dell'arte del saper vivere. Nell'architettura, la più imponente e la più discreta, il design del "sapere vivere" è quello che ha forza e gentilezza insieme.

I volumi sono solidi, essenziali, proteggono perché resistono al tempo. Dall'altezza minima di un tavolino, alla testata di un letto, che è monumento al sonno e alle energie del nuovo giorno, fino al vertice di una libreria che unisce i due piani di un antico palazzo, tutto ha senso, tutto è proporzione. Solo così la casa diventa un porto di mare, dove approdare felici ogni giorno.

A day in the seventeenth century. Along the docks of Antwerp, goods arrive from across the world, from Europe to the tropics and the Americas. The city's gaze is expansive, its character strong and grounded. Ideas travel too, and Paul Rubens journeys to Italy to study Raphael, Michelangelo and Titian. When he returns to Antwerp, he is a different artist, original because profoundly cultured. His home is now a museum. And every home is inspired by that same openness, that vital and far-reaching vision, becoming a small yet extraordinary masterpiece of the art of living.

In architecture, whether grand or understated, the design of savoir vivre is one that combines strength with grace. Volumes are solid, essential and enduring. From the low height of a coffee table to the headboard of a bed, both a monument to rest and a source of new energy, to the height of a bookcase connecting two levels of a historic residence, everything has meaning, everything is in proportion. Only then does the home become a harbour — one to return to, happily, every day.





















A long, cylindrical glass chandelier with a segmented design, suspended horizontally above the dining table.

A large, oval-shaped dining table with a vibrant red marble top and matching legs, surrounded by four black chairs.

A light green cabinet with a wooden top, featuring open shelving and a large dark vase with dried branches on top.

Ezra Stoller

































● CHAPTER 1
DREAMING IN LONDON

014



VICTORIA, consolle, console
TAIKI, divano, sofa

015



VICTORIA, consolle, console
SELECTA, sistema modulare, modular system

027



MIKI, lounge chair
OYDO, tavolino, coffee table

028, 029



SELECTA, sistema modulare, modular system
SHADE, tavolo, table
BEA, poltroncina, armchair
MODULA, madia, sideboard

031



SELECTA, sistema modulare, modular system

016, 017



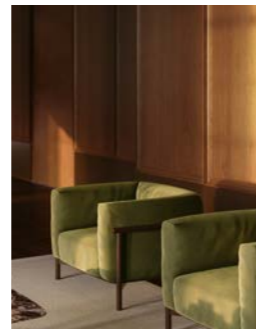
TAIKI, divano, sofa
TAIKI, poltrona, armchair
OYDO, tavolino, coffee table

018



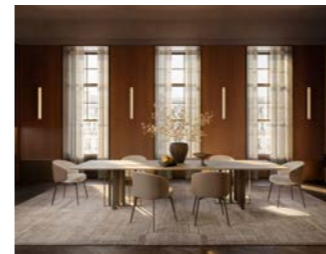
OYDO, tavolino, coffee table

019



TAKI, poltrona, armchair

032, 033



SHADE, tavolo, table
BEA, poltroncina, armchair

034



MODULA, madia, sideboard

035



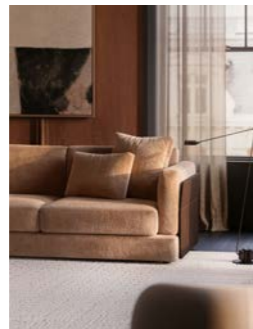
MODULA, madia, sideboard

020, 021



GROOVY, divano, sofa
DOLMEN, tavolino, coffee table
MIKI, poltroncina, lounge chair

023



GROOVY, divano, sofa

024, 025



GROOVY, divano, sofa
DOLMEN, tavolino, coffee table

036



VELO, armadio, wardrobe
ALEY, pouf

037



VELO, armadio, wardrobe

038, 039



NOBU, letto, bed
FLOWERS, tavolino, coffee table
MODULA, cassettone, chest of drawer

040



NOBU, letto, bed
FLOWERS, tavolino, coffee table

041



NOBU, letto, bed
FLOWERS, tavolino, coffee table

042



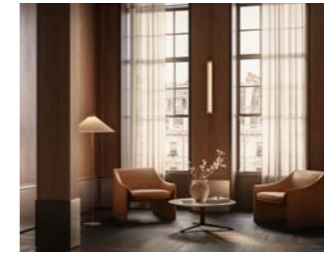
LENNOX, lounge chair
FLOWERS, tavolino, coffee table

053



MIREA, divano, sofa

054, 055



MASAMI, lounge chair
OYDO, tavolino, coffee table

056



MASAMI, lounge chair
OYDO, tavolino, coffee table

043



MODULA, panca, bench

045



MODULA, cassettone, chest of drawers

046, 047



MIREA, divano, sofa
GRAFFETTA, lounge chair
ORTIS, tavolino, coffee table
ORION, tavolino, coffee table
LT40, sistema modulare, modular system

057



MASAMI, lounge chair

058



LT40, isola, island

059



VENTITRE, cabina armadio, walk-in closet
LT40, isola, island

049



LT40, sistema modulare, modular system
ORION, tavolino, coffee table

050



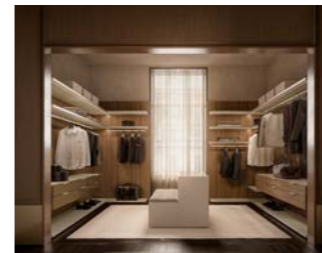
MIREA, divano, sofa
ORION, tavolino, coffee table

051



MIREA, divano, sofa

060, 061



VENTITRE, cabina armadio, walk-in closet
LT40, isola, island

062



VENTITRE, cabina armadio, walk-in closet

063



LT40, isola, island



● CHAPTER 2
FLOWERING IN PANTELLERIA

068, 069



L25 DAY, sistema modulare, modular system
SOFFIO, divano, sofa
DOLMEN, tavolino, coffee table
DRUM, pouf

071



SOFFIO, divano, sofa
FRANCIS, tavolino, coffee table

078, 079



L25 DAY, sistema modulare, modular system
GULLWING, tavolo, table
HATI, poltroncina, armchair

080



MODULA, madia, sideboard

081



MODULA, madia, sideboard

072



L25 DAY, sistema modulare, modular system
SOFFIO, divano, sofa
DOLMEN, tavolino, coffee table

073



DOLMEN, tavolino, coffee table

074



L25 DAY, sistema modulare, modular system

083



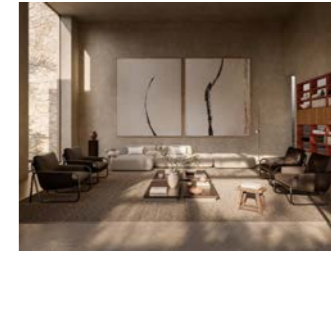
SELECTA, sistema modulare, modular system

084



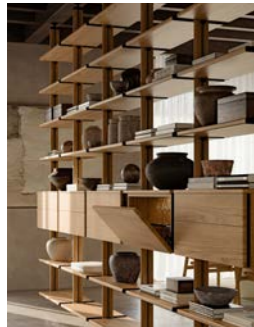
SELECTA, sistema modulare, modular system

086, 087



CLOUD, divano, sofa
GRAFFETTA, lounge chair
NIVEAUX, tavolino, coffee table
SELECTA, sistema modulare, modular system

075



L25 DAY, sistema modulare, modular system

076



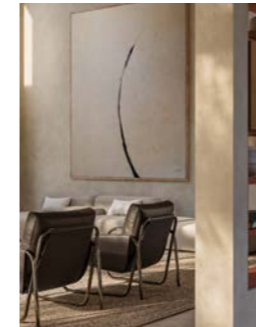
GULLWING, tavolo, table
HATI, poltroncina, armchair
MODULA, madia, sideboard

077



GULLWING, tavolo, table
HATI, poltroncina, armchair
MODULA, madia, sideboard

088



GRAFFETTA, lounge chair

089



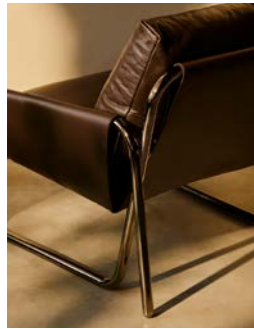
GRAFFETTA, lounge chair
SELECTA, sistema modulare, modular system

091



CLOUD, divano, sofa
SELECTA, sistema modulare, modular system
FRANCIS, tavolino, coffee table

092



GRAFFETTA, lounge chair

093



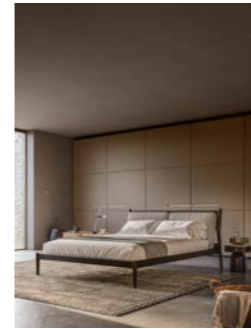
GRAFFETTA, lounge chair

094, 095



CAMILLE, letto, bed
SIGN, comodino, nightstand
SIGN, tavolino, coffee table
LT40, sistema modulare, modular system
TABBY, poltroncina, armchair

105



MADDOX, letto, bed
FRANCIS, tavolino, coffee table

106, 107



MADDOX, letto, bed
WARM, armadio, wardrobe
MODULA, comodino, nightstand
FRANCIS, tavolino, coffee table

108, 109



VENTITRE, cabina armadio, walk-in closet

097



CAMILLE, letto, bed
SIGN, comodino, nightstand
SIGN, tavolino, coffee table

098



LT40, sistema modulare, modular system
TABBY, poltroncina, armchair

099



VELO, armadio, wardrobe

111



FELIX, poltrona, armchair
MIR, specchio, mirror
FRANCIS, tavolino, coffee table

112, 113



VENTITRE, cabina armadio, walk-in closet

100



FLORENS, cassettone, chest of drawers

101



VELO, armadio, wardrobe

104



MODULA, comodino, nightstand



● CHAPTER 3
CROSSING IN ANTWERP

120, 121



AUREL, divano, sofa
VEGA, tavolino, coffee table

122



AUREL, divano, sofa

123



AUREL, divano, sofa

124, 125



AUREL, divano, sofa
VEGA, tavolino, coffee table

127



AUREL, divano, sofa
VEGA, tavolino, coffee table

139



AYON, sedia, chair

140



NOTCH, pouf

141



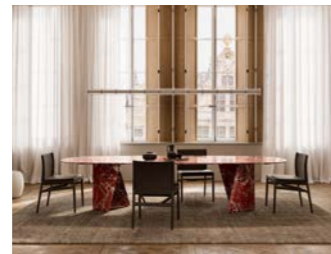
FLORENS, madia, sideboard

128, 129



AUREL, divano, sofa
VEGA, tavolino, coffee table
SIGN, tavolino, coffee table

132, 133



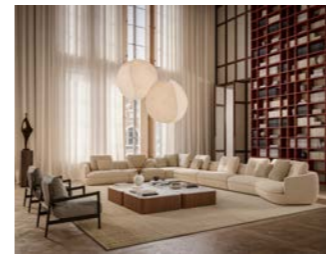
TRAVERSO, tavolo, table
AYON, sedia, chair

134



TRAVERSO, tavolo, table
AYON, sedia, chair

144, 145



MIREA, divano, sofa
DRUM, tavolino, coffee table
MADDIX, lounge chair

146



MIREA, divano, sofa
DRUM, tavolino, coffee table

147



SELECTA, sistema modulare, modular system
MIREA, divano, sofa
DRUM, tavolino, coffee table

135



TRAVERSO, tavolo, table
AYON, sedia, chair
SELECTA, sistema modulare, modular system

136, 137



TRAVERSO, tavolo, table
AYON, sedia, chair
SELECTA, sistema modulare, modular system

138



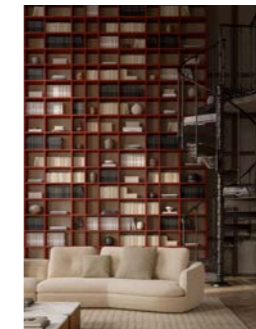
TRAVERSO, tavolo, table
AYON, sedia, chair
SELECTA, sistema modulare, modular system

148



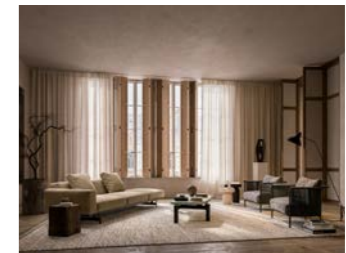
MADDIX, lounge chair

149



SELECTA, sistema modulare, modular system
MIREA, divano, sofa

150, 151



YARD, divano, sofa
VEGA, tavolino, coffee table
ALTON, lounge chair

152



YARD, divano, sofa

153



YARD, divano, sofa

155



ALTON, lounge chair
FRANCIS, tavolino, coffee table

166



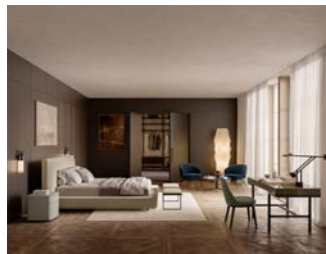
KYN, armadio, wardrobe

167



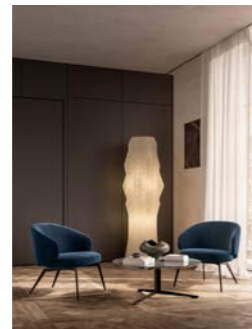
L25 NIGHT, sistema modulare, modular system
MASAMI, lounge chair
KYN, armadio, wardrobe

156, 157



LULLABY, letto, bed
LULLABY, comodino, nightstand
UMA, panca, bench
VICTOR, scrittoio, desk
LUCYLLE, sedia, chair
OMNYA, sistema modulare, modular system

158



BICE, lounge chair
OYDO, tavolino, coffee table
OMNYA, sistema modulare, modular system

159



VICTOR, scrittoio, desk
LUCYLLE, sedia, chair

162



LULLABY, letto, bed
LULLABY, comodino, nightstand
UMA, panca, bench

163



LULLABY, letto, bed
LULLABY, comodino, nightstand

164, 165



L25 NIGHT, sistema modulare, modular system
MASAMI, lounge chair

Technical Sheets



182	Tables
183	Coffee Tables
189	Armchairs and Poufs
193	Chairs
195	Benches
196	Sofas
199	Beds
200	Bookcases
203	Bedroom Containers
205	Walk-in Wardrobes
206	Sideboards and Containers
207	Modular Systems
211	Wardrobes
213	Mirrors
214	Desks
215	Consolle

**Tavoli
Tables**

GULLWING Gabriele and Oscar Buratti	pp. 076, 077, 078, 079	Piano Marmo Ricostruito Bianco Candoglia	Top Reconstructed Marble White Candoglia
		Struttura Metallo Verniciato LCT Latte 405	Structure Painted Metal LCT Latte 405
		Dimensioni L 3000 x H 730 x P 1050 mm	Dimensions W 118" x H 28 ¾" x D 41 ¼"



SHADE Francesco Rota	pp. 028, 029, 032, 033	Piano Argilla Polvere	Top Clay Polvere
		Struttura Metallo Verniciato Palladio M491	Structure Painted Metal Palladio M491
		Dimensioni L 3500 x H 730 x P 1090 mm	Dimensions W 137 ¾" x H 28 ¾" x D 43"

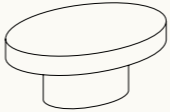


TRAVERSO Carlo Colombo	pp. 132, 133, 134, 135, 136, 137, 138	Piano Marmo Rosso Lepanto Lucido	Top Glossy Marble Red Lepanto
		Struttura Marmo Rosso Lepanto Lucido	Structure Glossy Marble Red Lepanto
		Dimensioni L 2900 x H 730 x P 1150 mm	Dimensions W 114 ¼" x H 28 ¾" x D 45 ¼"



**Tavolini
Coffee Tables**

DOLMEN David López Quincoces	pp. 020, 021, 024, 025	Piano Laccato LCT Fumo 906	Top Lacquered LCT Fumo 906
		Struttura Metallo Verniciato Bronzo M420	Structure Metal Painted Bronze M420
		Dimensioni Ø 960 x H 380 mm	Dimensions Ø 37 ¾" x H 15"



DOLMEN David López Quincoces	pp. 068, 069	Piano Laccato Opaco Avio 476	Top Matt Lacquered Avio 476
		Struttura Metallo Verniciato Bronzo M420	Structure Metal Painted Bronze M420
		Dimensioni L 800 x H 380 x P 800 mm	Dimensions W 31 ½" x H 15" x D 31 ½"



DOLMEN David López Quincoces	pp. 068, 069	Piano Rovere Termotrattato	Top Heat-treated Oak
		Struttura Metallo Verniciato Bronzo M420	Structure Metal Painted Bronze M420
		Dimensioni L 1600 x H 240 x P 800 mm	Dimensions W 63" x H 9 ½" x D 31 ½"



DOLMEN David López Quincoces	pp. 020, 021, 024, 025	Piano Noce-L	Top Walnut-L
		Struttura Metallo Verniciato Bronzo M420	Structure Metal Painted Bronze M420
		Dimensioni L 1600 x H 240 x P 800 mm	Dimensions W 63" x H 9 ½" x D 31 ½"



FLOWERS Roberto Lazzeroni	pp. 038, 039, 040, 041	Piano Pietra Grey Opaco	Top Matt Grey Stone
		Struttura Metallo Verniciato Nero M440	Structure Metal Painted Black M440
		Dimensioni L 600 x H 370 x P 511 mm	Dimensions W 23 ½" x H 14 ½" x D 20"



FLOWERS Roberto Lazzeroni	p. 042	Piano Laccato LCT Pistacchio 928	Top Lacquered LCT Pistacchio 928
		Struttura Metallo Verniciato Nero M440	Structure Metal Painted Black M440
		Dimensioni L 600 x H 370 x P 511 mm	Dimensions W 23 ½" x H 14 ½" x D 20"



FRANCIS Norm Architects	pp. 086, 087, 091	Struttura Argilla Polvere	Structure Clay Polvere
		Dimensioni Ø 400 x H 395 mm	Dimensions Ø 15 ¾" x H 15 ½"



FRANCIS Norm Architects	pp. 105, 106, 107	Struttura Argilla Creta	Structure Clay Creta
		Dimensioni Ø 400 x H 395 mm	Dimensions Ø 15 ¾" x H 15 ½"



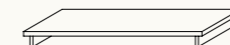
FRANCIS Norm Architects	pp. 105, 106, 107	Struttura Rovere Termotrattato	Structure Heat-treated Oak
		Dimensioni Ø 300 x H 500 mm	Dimensions Ø 11 ¾" x H 19 ¾"



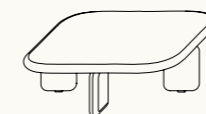
FRANCIS Norm Architects	pp. 086, 087, 091	Struttura Cemento Grigio Chiaro	Structure Grey Light Cement
		Dimensioni Ø 300 x H 500 mm	Dimensions Ø 11 ¾" x H 19 ¾"



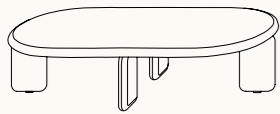
NIVEAUX Federica Biasi	pp. 086, 087	Piano Rovere Termotrattato	Top Heat-treated Oak
		Struttura Melaminico Grey Velvet	Structure Melamine Grey Velvet
		Dimensioni L 980 x H 105 x P 590 mm	Dimensions W 38 ½" x H 4" x D 23 ¼"



ORION Roberto Lazzeroni	pp. 046, 047, 050	Piano/struttura Rovere Termotrattato	Top/structure Heat-treated Oak
		Dimensioni L 900 x H 310 x P 900 mm	Dimensions W 23 ½" x H 12 ¼" x D 23 ½"



ORION Roberto Lazzeroni	pp. 046, 047, 049, 050	Piano/struttura Laccato Lucido LCL Caramello 245	Top/structure Glossy Lacquered LCL Caramello 245
		Dimensioni L 1500 x H 370 x P 700 mm	Dimensions W 59" x H 14 1/2" x D 27 1/2"



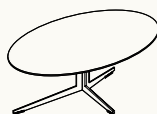
ORTIS Gabriele and Oscar Buratti	pp. 046, 050, 051	Piano Marmo Calacatta Vagli Oro Lucido	Top Glossy Marble Calacatta Vagli Oro
		Struttura Metallo Verniciato Bronzo M420	Structure Metal Painted Bronze M420
		Dimensioni L 600 x H 500 x P 400 mm	Dimensions W 23 1/2" x H 17 1/4" x D 15 3/4"



OYDO Francesco Rota	pp. 014, 017, 018	Piano Laccato Lucido LCL Miele 239	Top Glossy Lacquered LCL Miele 239
		Struttura Metallo Verniciato M420	Structure Painted Metal Bronze M420
		Dimensioni Ø 900 x H 370 mm	Dimensions Ø 35 1/2" x H 14 1/2"



OYDO Francesco Rota	pp. 054, 055, 056	Piano Marmo Rosso Cipollino Lucido	Top Glossy Red Cipollino Marble
		Struttura Metallo Verniciato M420	Structure Painted Metal Bronze M420
		Dimensioni Ø 900 x H 370 mm	Dimensions Ø 35 1/2" x H 14 1/2"



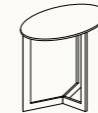
OYDO Francesco Rota	pp. 014, 017, 018	Piano Marmo Portoro	Top Marble Portoro
		Struttura Metallo Verniciato M420	Structure Painted Metal Bronze M420
		Dimensioni L 800 x H 280 x P 800 mm	Dimensions W 31 1/2" x H 11" x D 31 1/2"



SIGN Studio Kairos	pp. 128, 129	Piano Rovere Termotrattato	Top Heat-treated Oak
		Struttura Metallo Verniciato Bronzo M420	Structure Painted Metal Bronze M420
		Dimensioni Ø 450 x H 480 mm	Dimensions Ø 17 3/4" x H 19"



SIGN Studio Kairos	pp. 128, 129	Piano Laccato Opaco LCT Terracotta 478	Top Matt Lacquered LCT Terracotta 478
		Struttura Metallo Verniciato Bronzo M420	Structure Painted Metal Bronze M420
		Dimensioni Ø 450 x H 480 mm	Dimensions Ø 17 3/4" x H 19"



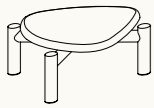
SIGN Studio Kairos	pp. 128, 129	Piano Rovere Termotrattato	Top Heat-treated Oak
		Struttura Metallo Verniciato Bronzo M420	Structure Painted Metal Bronze M420
		Dimensioni Ø 600 x H 300 mm	Dimensions Ø 23 1/2" x H 11 3/4"



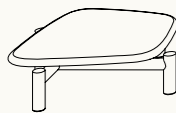
SIGN Studio Kairos	pp. 095, 097	Piano Laccato Opaco LCT Ombra 803	Top Matt Lacquered LCT Ombra 803
		Struttura Metallo Verniciato Bronzo M420	Structure Painted Metal Bronze M420
		Dimensioni Ø 600 x H 300 mm	Dimensions Ø 23 ½" x H 11 ¾"



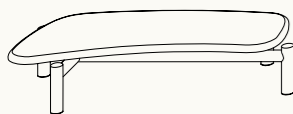
VEGA Roberto Lazzeroni	pp. 120, 121, 124, 125, 127, 128, 129	Piano Laccato Opaco LCT Terracotta 478	Top Matt Lacquered LCT Terracotta 478
		Struttura Frassino Tinto Rovere Carbone	Structure Carbone Oak-stained Solid Ash
		Dimensioni L 740 x H 350 x P 857 mm	Dimensions W 29 ¼" x H 13 ¾" x D 33 ¾"



VEGA Roberto Lazzeroni	pp. 120, 121, 124, 125, 127, 128, 129	Piano Laccato Lucido LCL Talpa 233	Top Glossy Lacquered LCL Talpa 233
		Struttura Frassino Tinto Rovere Carbone	Structure Carbone Oak-stained Solid Ash
		Dimensioni L 992 x H 300 x P 992 mm	Dimensions W 39" x H 11 ¾" x D 39"

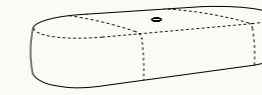


VEGA Roberto Lazzeroni	pp. 150, 151	Piano Laccato Opaco LCT Salvia 835	Top Glossy Lacquered LCT Salvia 835
		Struttura Frassino Tinto Rovere Carbone	Structure Carbone Oak-stained Solid Ash
		Dimensioni L 1652 x H 350 x P 902 mm	Dimensions W 65" x H 13 ¾" x D 35 ½"

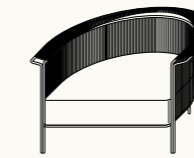


Poltrone e Pouf Armchairs and Poufs

ALEY POUF Gabriele and Oscar Buratti	p. 036	Rivestimento Tessuto Kuma TDD181	Upholstery Fabric Kuma TDD181
		Dimensioni L 1640 x H 430 x P 700 mm	Dimensions W 64 ½" x H 17" x D 27 ½"



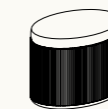
ALTON David López Quincoces	pp. 151, 155	Seduta/schienale Tessuto Ara TDF106	Seat/backrest Fabric Ara TDF106
		Struttura Metallo Verniciato Bronzo M420	Structure Painted Metal Bronze M420
		Corda Marrone Cerata Intrecciata	Woven backrest Waxed Cotton Dark Brown
Dimensioni L 1030 x H 635 x P 785 mm Seduta: 400 mm		Dimensions W 40 ½" x H 25" x D 31" Seat: 15 ¾"	



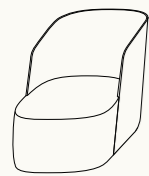
BICE Roberto Lazzeroni	pp. 157, 158	Seduta/schienale Velluto Chara TDE772	Seat/backrest Velvet Chara TDE772
		Struttura Metallo Verniciato Bronzo M420	Structure Painted Metal Bronze M420
		Dimensioni L 710 x H 720 x P 700 mm Seduta: 420 mm	Dimensions W 28" x H 28 ¼" x D 27 ½" Seat: 16 ½"



DRUM POUF Piero Lissoni	p. 068	Seduta Tessuto Namid TDE286	Seat cushion Fabric Namid TDE286
		Struttura Noce Canaletto Cannettato	Structure Ribbed Canaletto Walnut Wood
		Dimensioni Ø 560 x H 365 mm	Dimensions Ø 22" x H 14 ¼"



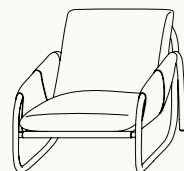
FELIX Roberto Lazzeroni	p. 111	Rivestimento Tessuto Ara TDF 104	Upholstery Fabric Ara TDF 104
		Dimensioni L 750 x H 710 x P 790 mm Seduta: 400 mm	Dimensions W 29 ½" x H 28" x D 31" Seat: 15 ¾"



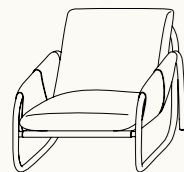
LENNOX Gordon Guillaumier	p. 042	Seduta/schienale Tessuto Nashira TDA402	Seat/backrest Fabric Nashira TDA 402
		Struttura Metallo Verniciato Bronzo M420	Structure Painted Metal Bronze M420
		Dimensioni L 1040 x H 690 x P 810 mm Seduta: 420 mm	Dimensions W 41" x H 27 ¼" x D 32" Seat: 16 ½"



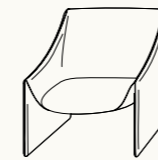
GRAFFETTA Carlo Colombo	p. 047	Seduta/schienale Tessuto Dorado TDD875	Seat/backrest Fabric Dorado TDD875
		Scocca Cuoio Naturale Invecchiato	Shell Aged Natural Light Hide
		Struttura Metallo Cromato Nero M210	Structure Black Chromed Metal M210
		Dimensioni L 770 x H 800 x P 880 mm Seduta: 440 mm	Dimensions W 30 ¼" x H 31 ½" x D 34 ¾" Seat: 17 ¼"



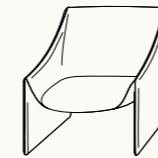
GRAFFETTA Carlo Colombo	pp. 086, 087, 088, 089, 092, 093	Seduta/schienale Pelle Super PS2266	Seat/backrest Leather Super PS2266
		Scocca Cuoio Light Caffè	Shell Light Hide Caffè
		Struttura Metallo Cromato Nero	Structure Black Chromed Metal
		Dimensioni L 770 x H 800 x P 880 mm Seduta: 440 mm	Dimensions W 30 ¼" x H 31 ½" x D 34 ¾" Seat: 17 ¼"



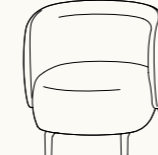
MASAMI Carlo Colombo	pp. 054, 055, 056, 057	Seduta Pelle Top Cervo PT0173	Seat Leather Top Cervo PT0173
		Struttura Pelle Cervo PT0173	Structure Leather Cervo PT0173
		Dimensioni L 820 x H 740 x P 820 mm Seduta: 440 mm	Dimensions W 32 ¼" x H 29 ¼" x D 32 ¼" Seat: 17 ¼"



MASAMI Carlo Colombo	pp. 165, 167	Seduta Tessuto Sirio TDC107	Seat Fabric Sirio TDC107
		Struttura Tessuto Sirio TDC107	Structure Fabric Sirio TDC107
		Dimensioni L 820 x H 740 x P 820 mm Seduta: 440 mm	Dimensions W 32 ¼" x H 29 ¼" x D 32 ¼" Seat: 17 ¼"




MIKI Pierattelli Architetture	pp. 021, 027	Seduta Tessuto Lyra TDC750	Seat Fabric Lyra TDC750
		Struttura Rovere Termotrattato	Structure Heat-treated Oak
		Dimensioni L 800 x H 750 x P 730 mm Seduta: 440 mm	Dimensions W 31 ½" x H 29 ½" x D 28 ¾" Seat: 17 ¼"

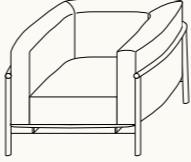





NOTCH POUF Johan Lindstén	p. 140	Seduta Tessuto Pegaso TDE400	Seat Fabric Pegaso TDE400
		Struttura Tessuto Pegaso TDE400	Structure Fabric Pegaso TDE400
		Dimensioni L 550 x H 430 x P 550 mm	Dimensions W 21 ¾" x H 17" x D 21 ¾"



	NOTCH POUF Johan Lindstén	p. 140	Seduta Tessuto Pegaso TDE400	Seat Fabric Pegaso TDE400
			Struttura Tessuto Pegaso TDE400	Structure Fabric Pegaso TDE400
			Dimensioni L 850 x H 400 x P 850 mm	Dimensions W 33 1/2" x H 15 3/4" x D 33 1/2"

Sedie Chairs

	TAIKI Chiara Andreatti	pp. 016, 017, 019	Rivestimento Velluto Chara TDE774	Upholstery Velvet Chara TDE774
			Struttura Frassino Tinto Rovere Termotrattato	Structure Heat-treated Oak Stained Ash
			Dimensioni L 960 x H 700 x P 870 mm Seduta: 420 mm	Dimensions W 37 3/4" x H 27 1/2" x D 34 1/4" Seat: 16 1/2"
	AYON Gabriele and Oscar Buratti	pp. 132, 133, 134, 135, 136, 137, 138, 139	Seduta/schienale Cuio Light Nero	Seat/backrest Light Hide Black
			Struttura Frassino Tinto Rovere Termotrattato	Structure Heat-treated Oak Stained Ash
			Dimensioni L 550 x H 800 x P 540 mm Seduta: 470 mm	Dimensions W 21 3/4" x H 31 1/2" x D 21 1/4" Seat: 18 1/2"
	BEA Roberto Lazzeroni	pp. 028, 029, 031, 032, 033	Seduta Tessuto Fenice TDD850	Top Fabric Fenice TDD850
			Schienale Pelle Top PT0011	Backrest Leather Top PT0011
			Struttura Metallo Verniciato Bronzo M420	Structure Painted Metal Bronze M420
			Dimensioni L 555 x H 755 x P 525 mm Seduta: 470 mm	Dimensions W 21 3/4" x H 29 3/4" x D 20 3/4" Seat: 18 1/2"
	HATI Piero Lissoni	pp. 076, 078, 079	Seduta/schienale Paglia Intrecciata	Seat/backrest Woven Natural Twine
			Struttura Frassino Naturale	Structure Natural Ash
			Dimensioni L 585 x H 770 x P 526 mm Seduta: 470 mm	Dimensions W 22" x H 30 1/4" x D 20 3/4" Seat: 18 1/2"

LUCYLLE Roberto Lazzeroni	pp. 157, 159, 161	Seduta/schienale Tessuto Lyra TDC754	Seat/backrest Fabric Lyra TDC754
		Struttura Frassino Tinto Rovere Termotrattato	Structure Heat-treated Oak Stained Ash
		Dimensioni L 530 x H 825 x P 580 mm Seduta: 470 mm	Dimensions W 20 ¾" x H 32 ½" x D 22 ¾" Seat: 18 ½"

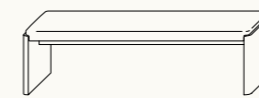


TABBY Gordon Guillaumier	pp. 094, 097	Seduta Tessuto Namid TDE284	Seat Fabric Namid TDE284
		Struttura Frassino Tinto Rovere Termotrattato	Structure Heat-treated Oak Stained Ash
		Dimensioni L 620 x H 745 x P 540 mm Seduta: 470 mm	Dimensions W 24 ½" x H 29 ¼" x D 21 ¼" Seat: 18 ½"



Panche Benches

MODULA Carlo Colombo	p. 045	Seduta Pelle Basic PB6011	Seat Leather Basic PB6011
		Struttura Laccato Lucido LCL Caramello 245	Structure Glossy Lacquered LCL Caramello 245
		Dimensioni L 1500 x H 450 x P 420 mm	Dimensions W 59" x H 17 ¾" x D 16 ½"

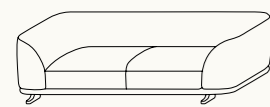


UMA Federica Biasi	p. 162	Rivestimento Pelle Super PS2262	Upholstery Leather Super PS2262
		Struttura Metallo Verniciato Bronzo M420	Structure Painted Metal Bronze M420
		Dimensioni L 1500 x H 430 x P 400 mm	Dimensions W 59" x H 17" x D 15 ¾"



**Divani
Sofas**

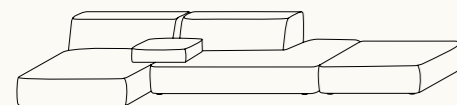
AUREL Carlo Colombo	pp. 120, 121, 123, 124, 125, 128, 129	Rivestimento Tessuto Andromeda TDF123	Upholstery Fabric Andromeda TDF123
		Dimensioni L 2500 x H 680 x P 1060 mm	Dimensions W 98 1/2" x H 26 3/4" x D 41 3/4"



AUREL Carlo Colombo	pp. 120, 121, 122, 124, 125, 127, 128, 129	Rivestimento Tessuto Andromeda TDF123	Upholstery Fabric Andromeda TDF123
		Dimensioni L 4400 x H 680 x P 1060 mm	Dimensions W 173 1/4" x H 26 3/4" x D 41 3/4"



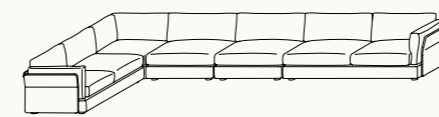
CLOUD Francesco Rota	pp. 086, 087, 088, 091	Rivestimento Tessuto Aurora TDD083	Upholstery Fabric Aurora TDD083
		Dimensioni L 4160 x H 630 x P 1180 mm Chaise longue: 1230 mm	Dimensions W 163 3/4" x H 24 3/4" x D 46 1/2" Chaise longue: 48 1/2"



GROOVY Officinadesign Lema	pp. 020, 021, 024	Braccioli/schienali Pelle Top PT0013	Armrest/backrest Leather Top PT0013
		Seduta/schienale Tessuto Ariel TDD014	Seat/backrest Fabric Ariel TDD014
		Dimensioni L 2110 x H 790 x P 1530 mm	Dimensions W 83" x H 31" x D 60 1/4"



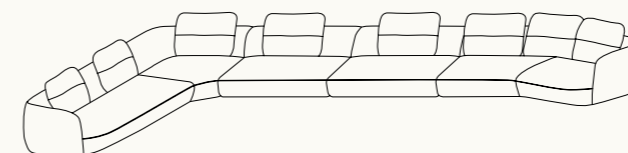
GROOVY Officinadesign Lema	pp. 020, 021, 023, 025	Braccioli/schienali Pelle Top PT0013	Armrest/backrest Leather Top PT0013
		Seduta/schienale Tessuto Ariel TDD014	Seat/backrest Fabric Ariel TDD014
		Dimensioni L 4100 x H 650 x P 1030 mm Chaise longue: 1500 mm	Dimensions W 161 1/2" x H 25 1/2" x D 40 1/2" Chaise longue: 59"



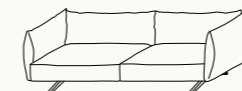
MIREA Roberto Lazzeroni	pp. 046, 050, 051, 053	Rivestimento Tessuto Andromeda TDF120	Upholstery Fabric Andromeda TDF120
		Dimensioni L 4100 x H 650 x P 1030 mm Chaise longue: 1500 mm	Dimensions W 161 1/2" x H 25 1/2" x D 40 1/2" Chaise longue: 59"



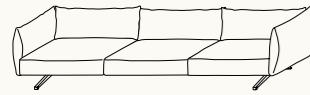
MIREA Roberto Lazzeroni	pp. 144, 145, 146, 147, 149	Rivestimento Fabric Pegaso TDE401	Upholstery Fabric Pegaso TDE401
		Dimensioni L 4850 x H 650 x P 1030 mm Chaise longue: 1450 mm	Dimensions W 191" x H 25 1/2" x D 40 1/2" Chaise longue: 57"



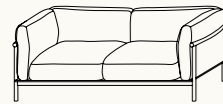
SOFFIO Norm Architects	p. 069	Rivestimento Tessuto Pavo TDD232	Upholstery Fabric Pavo TDD232
		Piede Metallo Verniciato Bronzo M420	Feet Painted Metal Bronze M420
		Dimensioni L 2050 x H 720 x P 980 mm	Dimensions W 80 3/4" x H 28 1/4" x D 38 1/2"



SOFFIO Norm Architects	pp. 068, 069, 071, 072	Rivestimento Tessuto Pavo TDD232	Upholstery Fabric Pavo TDD232
		Dimensioni L 2950 x H 720 x P 980 mm	Dimensions W 116 ¼" x H 28 ¼" x D 38 ½"

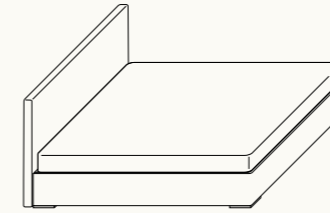


TAIKI Chiara Andreatti	pp. 014, 016, 017	Rivestimento Velluto Chara TDE774	Upholstery Velvet Chara TDE774
		Struttura Frassino Tinto Rovere Termotrattato	Structure Heat-treated Oak Stained Ash
		Dimensioni L 1800 x H 700 x P 280 mm	Dimensions W 70 ¾" x H 27 ½" x D 34 ¼"

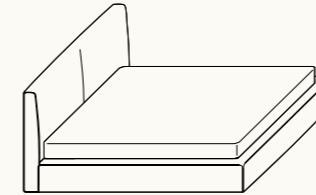


Letti Beds

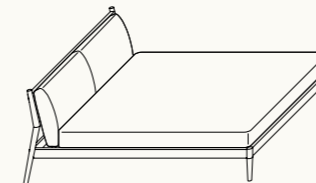
CAMILLE Officinadesign Lema	pp. 095, 097	Testata Tessuto Selene TDD053	Headboard Fabric Selene TDD053
		Struttura Tessuto Selene TDD053	Structure Fabric Selene TDD053
		Dimensioni L 2160 x P 1900 mm Seduta: 300 mm Testata: 985 mm	Dimensions W 85" x D 74 ¾" Seat: 11 ¾" Headboard: 38 ¾"



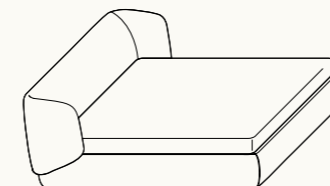
LULLABY Ludovica and Roberto Palomba	pp. 182, 183	Testata Tessuto Elara TDE140 Cucitura Filo Lana Marrone	Headboard Fabric Elara TDD140 Brown Wool Thread Stitchin
		Struttura Tessuto Elara TDE140 Cucitura Filo Lana Marrone	Structure Fabric Elara TDD140 Brown Wool Thread Stitchin
		Dimensioni L 2420 x P 2060 mm Seduta: 310 mm Testata: 1120 mm	Dimensions W 94 ¼" x D 81" Seat: 12 ¼" Headboard: 44"



MADDOX Dainelli Studio	pp. 105, 106, 107	Testata Tessuto Tabit TDE862	Headboard Fabric Tabit TDE862
		Struttura Frassino Tinto Rovere Termotrattato	Structure Heat-treated Oak Stained Ash
		Dimensioni L 2355 x P 1910 mm Seduta: 300 mm Testata: 980 mm	Dimensions W 92 ¾" x D 71" Seat: 11 ¾" Headboard: 38 ½"



NOBU Carlo Colombo	pp. 038, 039, 040, 041	Testata Tessuto Andromeda TDF120	Headboard Fabric Andromeda TDF120
		Struttura Tessuto Andromeda TDF120	Structure Fabric Andromeda TDF120
		Dimensioni L 2410 x P 1915 mm Seduta: 320 mm Testata: 880 mm	Dimensions W 94 ¾" x D 84 ¼" Seat: 12 ½" Headboard: 34 ¾"



L25
Officinadesign Lema pp. 068, 069, 072, 074,
075, 078, 079

Montanti a soffitto
Metallo Verniciato Bronzo Epox M421

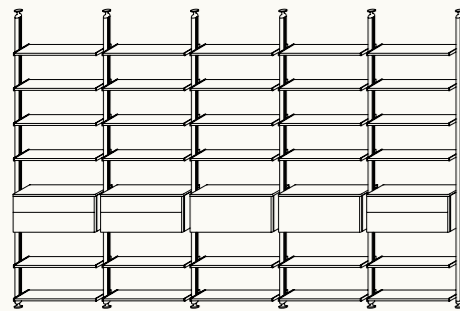
Ceiling upright
Metal Painted Bronze Epox M421

Attrezzatura
Noce-L

Equipment
Walnut-L

Dimensioni
L 4746 x H 3135 x P 414 mm

Dimensions
W 186 3/4" x H 123 1/2" x D 16 1/4"



SELECTA
Officinadesign Lema pp. 015, 028, 029

Struttura
Noce-L

Struttura
Walnut-L

Frontali
Rovere Carbone

Front panels
Carbone Oak

Fondali
Noce-L

Back panels
Walnut-L

Fondali parti chiuse da vetrine
Rovere Carbone

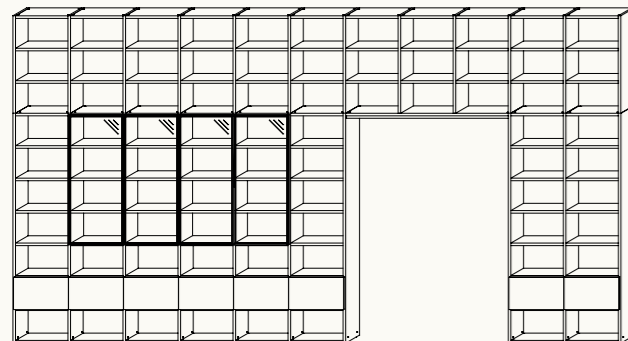
Back panels for sections with glass
doors
Carbone Oak

Ante Dandy
Vetro Extralight
Metallo Anodizzato Nero M101

Dandy doors
Extralight Glass
Black Anodised Metal M101

Dimensioni
L 6595 x H 3555 x P 346 mm

Dimensions
W 259 3/4" x H 140" x D 13 1/2"



SELECTA
Officinadesign Lema p. 030

Struttura
Noce-L

Structure
Walnut-L

Facciata
Rovere Termotrattato

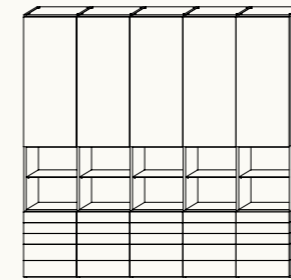
Front
Heat-treated Oak

Fondali vani a giorno
Velluto Phobos TDC462

Backs of open units
Velvet Phobos TDC462

Dimensioni
L 3013 x H 2850 x P 346 mm

Dimensions
W 118 1/2" x H 112 1/4" x D 13 1/2"



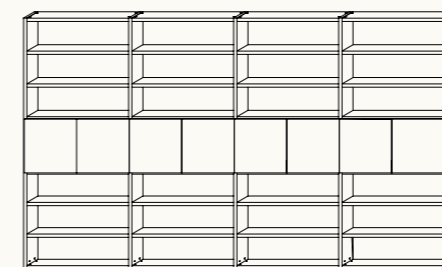
SELECTA
Officinadesign Lema pp. 083, 084, 087, 091

Struttura
Laccato Opaco LCT Terracotta 478

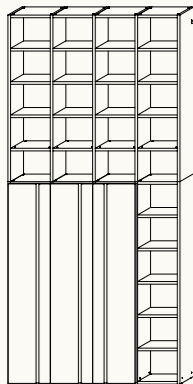
Structure
Matt Lacquered LCT Terracotta 478

Dimensioni
L 3612 x H 2146 x P 210 mm

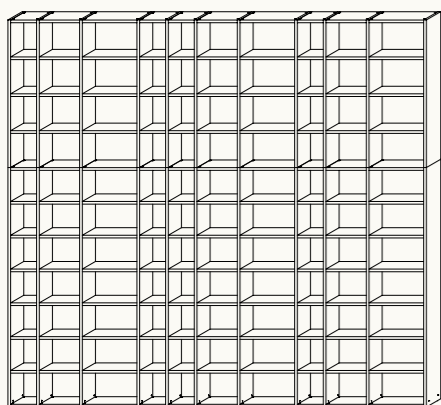
Dimensions
W 142 1/4" x H 28 1/2" x D 8 1/2"



SELECTA Officinadesign Lema	pp. 135, 137, 140	Struttura Noce-L	Structure Walnut-L
		Ante Naica Noce-L	Doors Naica Walnut-L
		Dimensioni L 1820 x H 3907 x P 346 mm	Dimensions W 71 3/4" x H 153 3/4" x D 13 1/2"

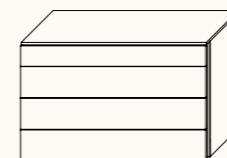


SELECTA Officinadesign Lema	pp. 144, 147, 149	Struttura Laccato Opaco LCT Bruciato 477	Structure Matt Lacquered LCT Bruciato 477
		Dimensioni L 4357 x H 4035 x P 346 mm	Dimensions W 171 1/2" x H 158 3/4" x D 13 1/2"

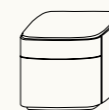


Contenitori Notte Bedrooms Containers

FLORENS Gabriele and Oscar Buratti	p. 100	Piano Laccato Lucido LCL Nocciola 213	Top Glossy Lacquered LCL Nocciola 213
		Struttura Laccato Lucido LCL Nocciola 213	Structure Glossy Lacquered LCL Nocciola 213
		Dimensioni L 1134 x H 744 x P 560 mm	Dimensions W 44 3/4" x H 29 1/4" x D 22"



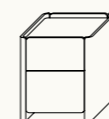
LULLABY Ludovica and Roberto Palomba	p. 162	Piano Laccato Opaco LCT Antimonio 870	Top Matt Lacquered LCT Antimonio 870
		Struttura Laccato Opaco LCT Antimonio 870	Structure Matt Lacquered LCT Antimonio 870
		Dimensioni L 548 x H 480 x P 498 mm	Dimensions W 21 1/2" x H 19" x D 19 1/2"



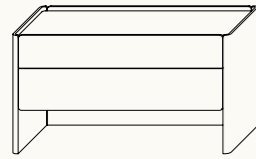
LULLABY Ludovica and Roberto Palomba	pp. 162, 163	Piano Laccato Opaco LCT Basalto 920	Top Matt Lacquered Basalto 920
		Struttura Laccato Opaco LCT Basalto 920	Structure Matt Lacquered Basalto 920
		Dimensioni L 548 x H 480 x P 498 mm	Dimensions W 21 1/2" x H 19" x D 19 1/2"



MODULA Carlo Colombo	p. 104	Piano Marmo Carrara Opaco	Top Matt Carrara Marble
		Struttura Laccato Lucido Miele 239	Structure Glossy Lacquered Miele 239
		Dimensioni L 420 x H 506 x P 420 mm	Dimensions W 16 1/2" x H 20" x D 16 1/2"



MODULA Carlo Colombo	pp. 042, 045	Piano Laccato Lucido LCL Caramello 245	Top Glossy Lacquered LCL Caramello 245
		Struttura Laccato Lucido LCL Caramello 245	Structure Glossy Lacquered LCL Caramello 245
		Dimensioni L 1300 x H 706 x P 470 mm	Dimensions W 51 ¼" x H 27 ¾" x D 18 ½"

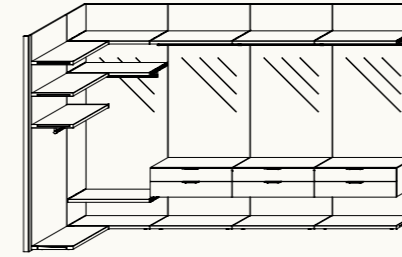


SIGN Studio Kairos	p. 095	Piano Laccato Opaco LCTimo 480	Top Matt Lacquered LCTimo 480
		Struttura Metallo Verniciato Bronzo M420	Structure Painted Metal Bronze M420
		Dimensioni Ø 600 x H 300 mm	Dimensions Ø 23 ½" x H 11 ¾"

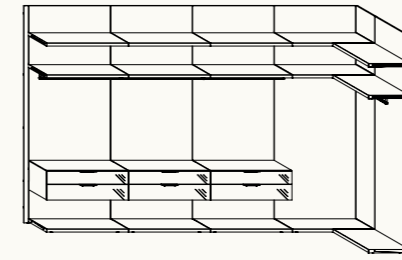


Cabine armadio Walk-in Wardrobes

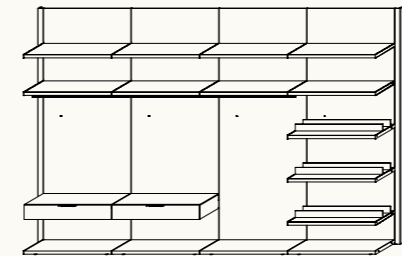
VENTITRE David López Quincoces	pp. 059, 060, 061	Pannelli Melaminico Noce/Specchio Bronzo	Panels Melamine Walnut/Bronze Mirror
		Attrezzatura Skin Dress Pelle Sintetica DLR TDR 003	Fittings Skin Dress Synthetic Leather DLR TDR 003
		Dimensioni L 4032 x H 2624 x P 1626 mm	Dimensions W 158 ¾" x H 103 ¼" x D 64"



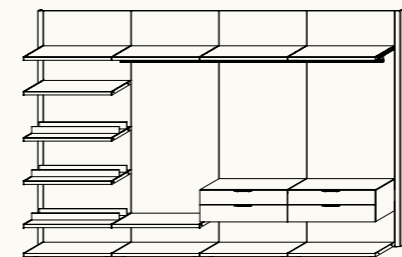
VENTITRE David López Quincoces	pp. 060, 061, 062	Pannelli Melaminico Noce	Panels Melamine Walnut
		Attrezzatura Skin Dress Pelle Sintetica DLR TDR 003	Fittings Skin Dress Synthetic Leather DLR TDR 003
		Frontali cassetti Specchio Bronzo	Front drawers Bronze Mirror



VENTITRE David López Quincoces	pp. 108, 109, 112, 113	Pannelli Melaminico Rovere Ambra	Top Melamine Ambra Oak
		Struttura Metallo Verniciato Champagne Epox M465	Structure Metal Painted Champagne Epox M465
		Dimensioni L 4066 x H 2624 x P 569 mm	Dimensions W 160" x H 46 ½" x D 22 ½"



VENTITRE David López Quincoces	pp. 108, 109	Pannelli Melaminico Rovere Ambra	Top Melamine Ambra Oak
		Struttura Metallo Verniciato Champagne Epox M465	Structure Metal Painted Champagne Epox M465
		Dimensioni L 4066 x H 2624 x P 569 mm	Dimensions W 160" x H 46 ½" x D 22 ½"



FLORENS
Gabriele and Oscar Buratti

p. 137

Contenitore in appoggio
Noce-L

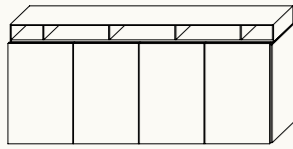
Upper open storage container
Walnut-L

Struttura
Laccato Lucido LCL Ortica 235

Structure
Glossy Lacquered LCL Ortica 235

Dimensioni
L 2020 x H 950 x P 508 mm

Dimensions
W 79 1/2" x H 37 1/4" x D 20"



MODULA
Carlo Colombo

pp. 029, 034, 035

Piano
Marmo Celadon Lucido

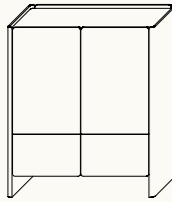
Top
Glossy Marble Celadon

Struttura
Laccato Lucido LCL Granata 238

Structure
Glossy Lacquered Granata 238

Dimensioni
L 1129 x H 1300 x P 500 mm

Dimensions
W 44 1/2" x H 51 1/4" x D 19 3/4"



MODULA
Carlo Colombo

pp. 076, 077, 080, 081

Piano
Laccato Lucido LCL Persia 241

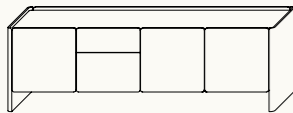
Top
Glossy Lacquered LCL Persia 241

Struttura
Laccato Lucido LCL Persia 241

Structure
Glossy Lacquered LCL Persia 241

Dimensioni
L 2175 x H 676 x P 500 mm

Dimensions
W 85 1/2" x H 26 1/2" x D 19 3/4"



L25 NIGHT
Officinadesign Lema

pp. 164, 165, 167

Montanti a parete
Metallo Verniciato Bronzo Epox M421

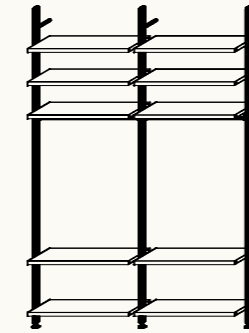
Wall upright
Metal Painted Bronze Epox M421

Attrezzatura
Melaminico Java

Equipment
Melamine Java

Dimensioni
L 2158 x H 3095 x P 564 mm

Dimensions
W 85" x H 121 3/4" x D 22 1/2"



L25 NIGHT
Officinadesign Lema

pp. 164, 165, 167

Montanti a parete
Metallo Verniciato Bronzo Epox M421

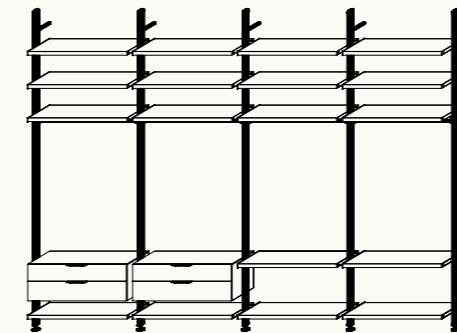
Wall upright
Metal Painted Bronze Epox M421

Attrezzatura
Melaminico Java

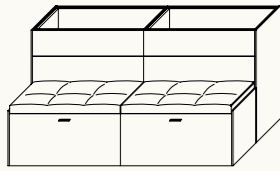
Equipment
Melamine Java

Dimensioni
L 4240 x H 3095 x P 564 mm

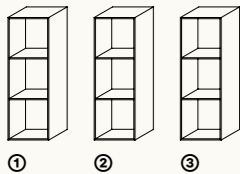
Dimensions
W 167" x H 121 3/4" x D 22 1/2"



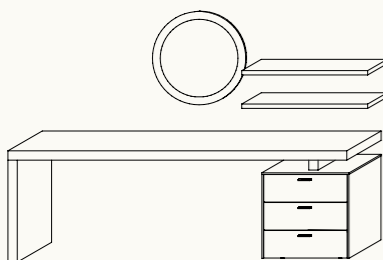
LT40 David López Quincoces	pp. 058, 059, 060, 061, 063	Struttura Laccato Lucido Scoglio 212	Structure Matt Laquered LCL Scoglio 212
		Interni Pelle Sintetica DLR TDR 003	Internal fittings Synthetic Leather DLR TDR 003
		Teca Vetro Trasparente Extralight	Display case Extra Light Transparent Glass
		Divanetto Tessuto Eridani TDE640	Seat Fabric Eridani TDE640
		Dimensioni L 1640 x H 840 x P 981 mm	Dimensions W 64 ½" x H 33" x 38 ½"



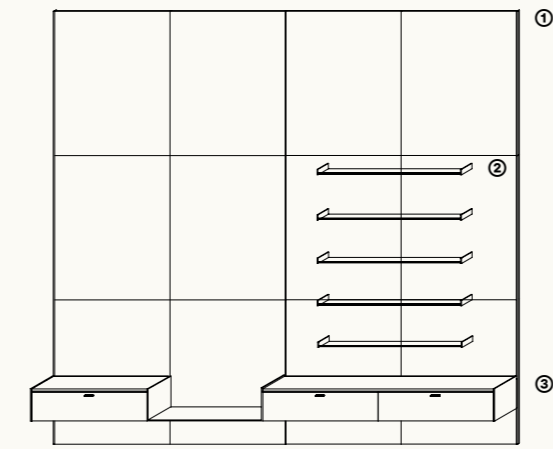
LT40 David López Quincoces	pp. 016, 017	Fondale Laccato Opaco LCT Terra 805	Back panel Matt Lacquered LCT Terra 805
		Struttura Vetro Trasparente Extralight	Structure Extra Light Transparent Glass
		Dimensioni ① L 270 x H 810 x P 280 mm	Dimensions ① W 10 ¾" x H 32" x D 11"
		Dimensioni ② L 270 x H 810 x P 280 mm	Dimensions ② W 10 ¾" x H 32" x D 11"
		Dimensioni ③ L 270 x H 810 x P 280 mm	Dimensions ③ W 10 ¾" x H 32" x D 11"



LT40 David López Quincoces	pp. 094, 098	Panca a terra Argilla Creta	Bench Clay Creta
		Cassettiera Rovere Termotrattato	Desk drawer unit Heat-treated Oak
		Mensole Laccato Opaco LCT Terra 8	Shelves Matt Lacquered LCT Terra 805
		Dimensioni L 2180 x H 1181 x P 510 mm	Dimensions W 85 ¾" x H 46 ½" x D 20"

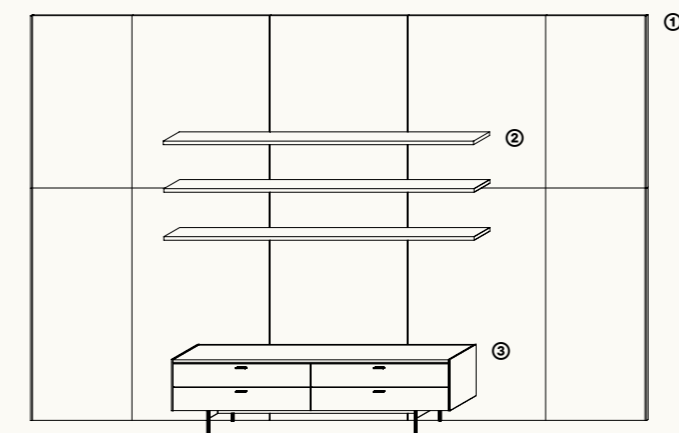


LT40 David López Quincoces	p. 128	Boiserie ①	Boiserie ①
		Struttura Laccato Opaco LCT Sabbia 910	Structure Matt Lacquered LCT Sabbia 910
		Dimensioni L 4335 x H 4055 x P 48 mm	Dimensions W 170 ¾" x H 159 ¾" x D 2"
		Mensola ②	Shelf ②
		Piano Laccato Opaco LCT Ombra 803	Top Matt Lacquered Ombra 803



		Struttura Metallo Verniciato Bronzo M420	Structure Painted Metal Bronze M420
		Dimensioni L 1342 x H 28 x P 280 mm	Dimensions W 52 ¾" x H 1" x 11"
		Mobile pensile ③	Hanging unit ③
		Piano Marmo Calacatta Vagli Oro Lucido	Top Glossy Marble Calacatta Vagli Oro
		Struttura Laccato Lucido Nocciola 213	Structure Glossy Lacquered LCL Nocciola 213
		Dimensioni L 4341 x H 302 x P 476 mm	Dimensions W 171" x H 12" x D 18 ¾"

LT40 David López Quincoces	pp. 047, 049	Boiserie ①	Boiserie ①
		Struttura W-Line	Structure W-Line
		Dimensioni L 4824 x H 3170 x P 48 mm	Dimensions W 190" x H 124 ¾" x D 2"
		Mensola ②	Shelve ②
		Struttura Rovere Termotrattato	Structure Heat-treated Oak
		Dimensioni L 2430 x SP 28 x P 280 mm	Dimensions W 95 ¾" x H 1" x D 11"



		Madia ③	Sideboard ③
		Piano Marmo Rosso Cipollino	Top Glossy Red Cipollino Marble
		Struttura Laccata Lucida LCL Scoglio 212	Structure Glossy Lacquered Scoglio 212
		Base Metallo Verniciato Bronzo Patinato M422	Base Painted Metal in Coated Bronze M422
		Dimensioni L 2180 x H 597 x P 476 mm	Dimensions W 85 ¾" x H 23 ½" x D 18 ¾"

OMNYA
Officinadesign Lema

pp. 156, 157, 158, 162, 163

Parete ① Wall ①

Struttura
Rovere Carbone Structure
Carbone Oak

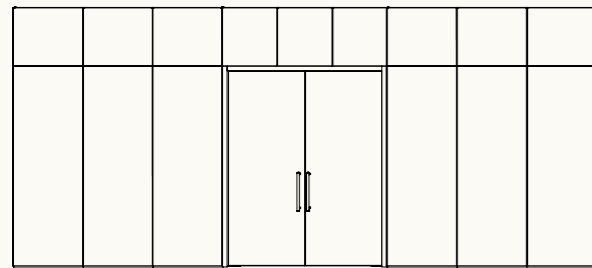
Dimensioni
L 7586 x H 3380 x P 346 mm Dimensions
W 298 ¾" x H 133" x D 1"

Passaggio porta a due ante ② Double doors passage ②

Struttura
Rovere Carbone Structure
Carbone Oak

Dettagli maniglie/profilii
Metallo Verniciato Bronzo Epox M421 Handle/frame deatails
Painted Metal Bronze Epox M421

Dimensioni
L 2020 x H 3095 x P 660 mm Dimensions
W 79 ½" x H 103 ¼" x D. 26"



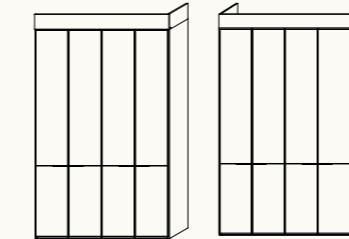
①

②

Armadi Wardrobes

KYN
David López Quincoces

pp. 166, 167

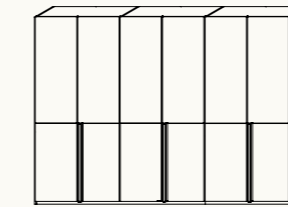


①

②

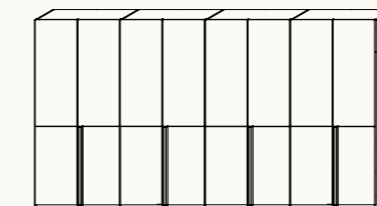
VELO
Carlo Colombo

pp. 036, 037



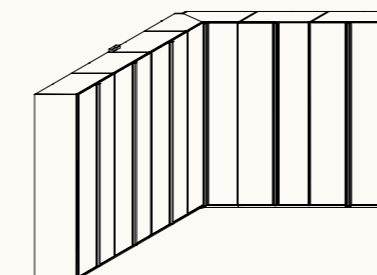
VELO
Carlo Colombo

pp. 036, 037



VELO
Carlo Colombo

pp. 099, 100, 101



Struttura
Rovere Carbone

Structure
Carbone Oak

Dimensioni ①
L 1853 x H 3200 x P 611 mm

Dimensions ①
W 73" x H 126" x D 24"

Dimensioni ②
L 1853 x H 3200 x P 611 mm

Dimensions ②
W 73" x H 126" x D 24"

Ante
Pelle Sintetica DLR TDR 003

Doors
Synthetic Leather DLR TDR 003

Maniglie
Metallo Verniciato Bronzo Epox M421

Handles
Painted Metal Bronze Epox M421

Rivestimento maniglie
Pelle Sintetica DLR TDR 003

Handles covering
Synthetic Leather DLR TDR 003

Dimensioni
L 3595 x H 2624 x P 613 mm

Dimensions
W 114 ½" x H 103 ¼" x D 24"

Ante
Pelle Sintetica DLR TDR 003

Doors
Synthetic Leather DLR TDR 003

Maniglie
Metallo Verniciato Bronzo Epox M421

Handles
Painted Metal Bronze Epox M421

Rivestimento maniglie
Pelle Sintetica DLR TDR 003

Handles covering
Synthetic Leather DLR TDR 003

Dimensioni
L 4785 x H 2624 x P 613 mm

Dimensions
W 188 ½" x H 103 ¼" x D 24"

Ante
Pelle Sintetica DLR TDR 005

Doors
Synthetic Leather DLR TDR 005

Maniglie
Metallo Verniciato Bronzo Epox M421

Handles
Painted Metal Bronze Epox M421

Rivestimento maniglie
Pelle Sintetica DLR TDR005

Handles covering
Synthetic Leather DLR TDR 005

Dimensioni
L 4116 + 3140 x H 2624 x P 612 mm

Dimensions
W 1162" + 123 ½" x H 103 ¼" x D 24"

WARM
David López Quincoces

pp. 105, 106, 107

Ante
Cuoio Light Tortora

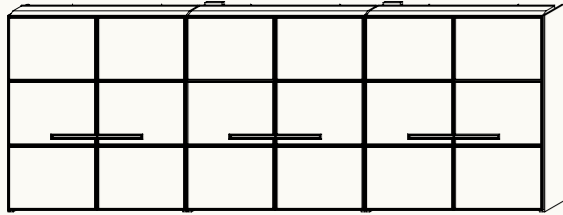
Doors
Light Hide Tortora

Dettagli
Metallo Anodizzato Warm M103

Dettagli
Anodized Metal Warm M103

Dimensioni
L 7165 x H 2624 x P 623 mm

Dimensioni
W 282" x H 103 1/4" x D 24 1/2"



Specchi Mirrors

MIR
Ludovica and Roberto Palomba

p. 111

Struttura
Metallo Verniciato Bianco Latte 405

Structure
Painted Metal White LCT Latte 405

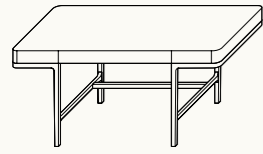
Dimensioni
L 310 x H 1835 x P 310 mm

Dimensioni
W 12 1/4" x H 72 1/4" x D 12 1/4"



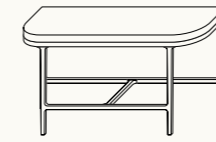
**Scrivanie
Desks**

VICTOR Roberto Lazzeroni	pp. 157, 159	Piano Laccato Lucido LCL Talpa 233	Top Glossy Lacquered LCL Talpa 233
		Struttura Rovere Carbone	Structure Carbone Oak
		Dimensioni L 1660 x H 760 x P 700 mm	Dimensions W 65 ¼" x H 30" x D 27 ½"



**Console
Consolle**

VICTORIA Roberto Lazzeroni	pp. 014, 015	Piano Marmo Portoro Opaco	Top Matt Portoro Marble
		Struttura Rovere Carbone	Structure Carbone Oak
		Dimensioni L 1400 x H 760 x P 450 mm	Dimensions W 55" x H 30" x D 17 ¾"



LEMA

Art Direction
A++

Feel at Home, Vol. II

Creative Direction
Davies Costacurta

Graphic Design
Studio Costacurta

Photography
Robert Rieger

CGI Images and Pre Press
Nudesign

CGI Images Styling
Alessandra Vigani

Set Design e Styling
Greta Cevenini Studio

Copywriting
Laura Leonelli

Printed in Italy
O.G.M., 2026

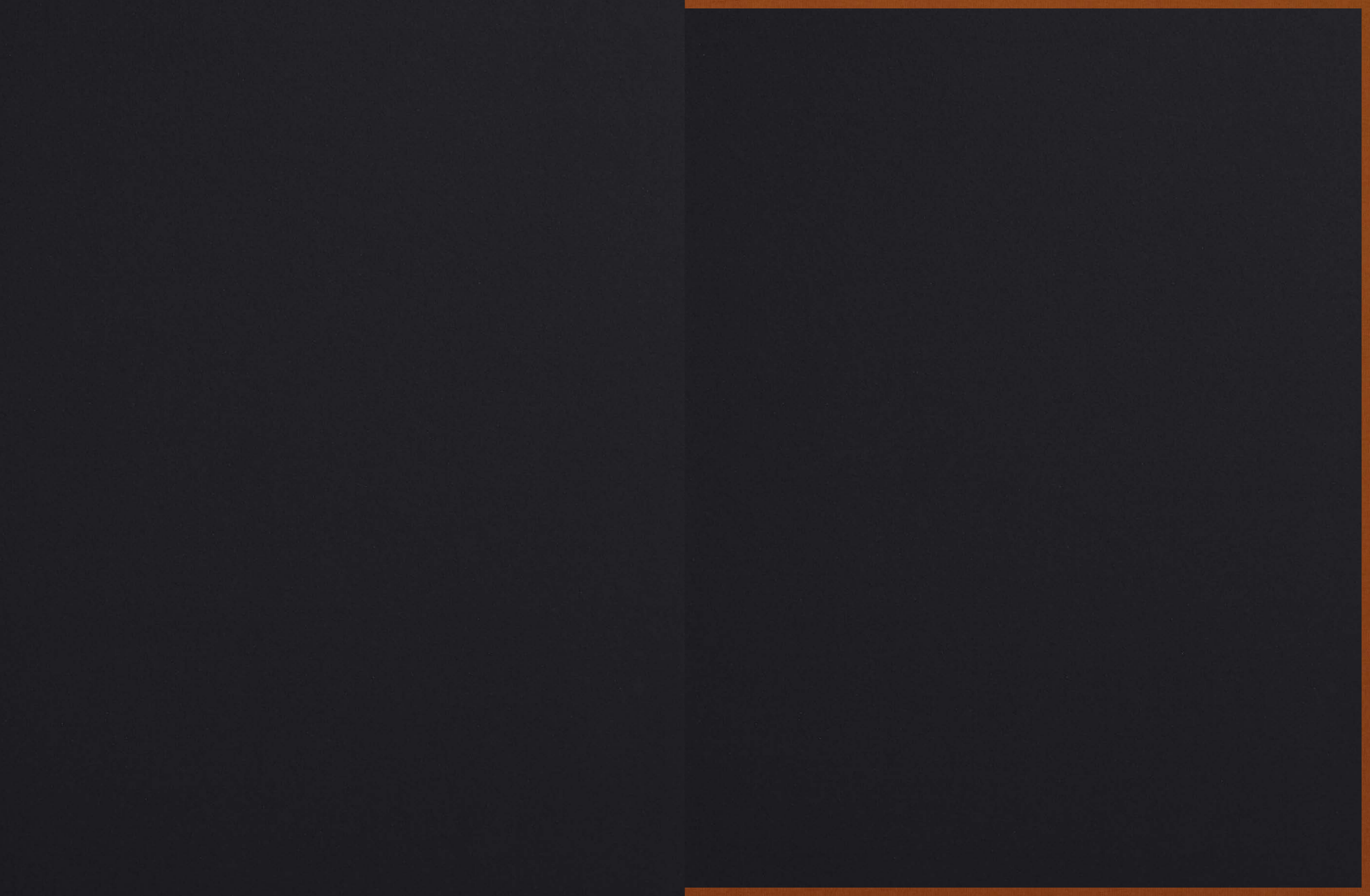
Thanks to
Enrico Della Torre, Cadogan Gallery
Richard Zinon, Cadogan Gallery
GOLRAN 1898
Lanerossi
My style bags
Vipera the label
Vitra



The mark of
responsible forestry
FSC® C108778

Richiedi i nostri prodotti certificati FSC®.
FSC® si dedica alla promozione della gestione
responsabile delle foreste del mondo.

Request our FSC®-certified products.
FSC® is dedicated to promoting responsible
management of the world's forests.



A home where time can flow freely, yet be cherished in its endless moments of love. A home in which to grow together, recognising that with each passing day, time brings greater beauty, experience, light and talent. A LEMA home is one that safeguards time, enriches it, and gently embraces it, because everything has its place. And when time and space find their true meaning, life becomes a magnificent project.